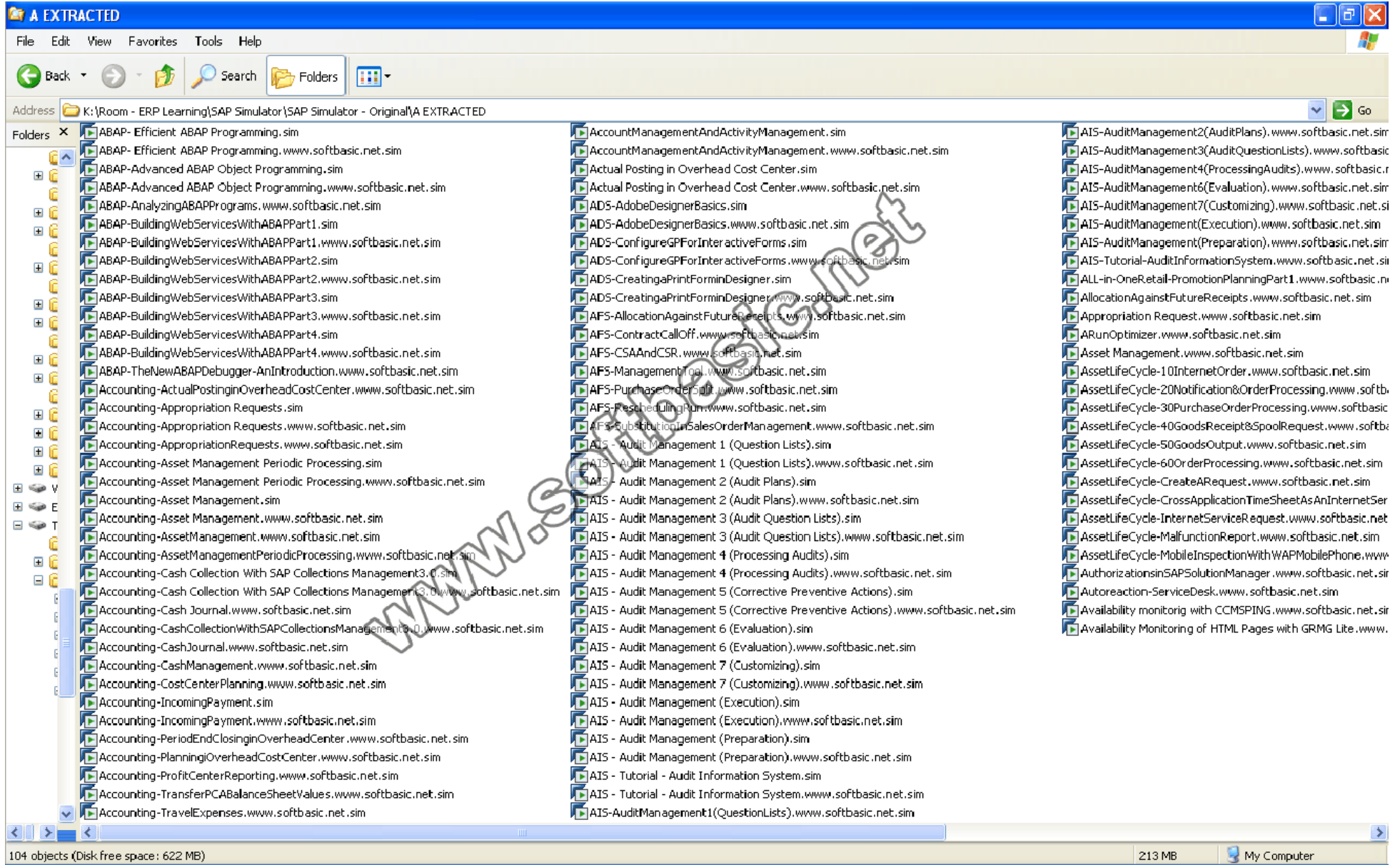
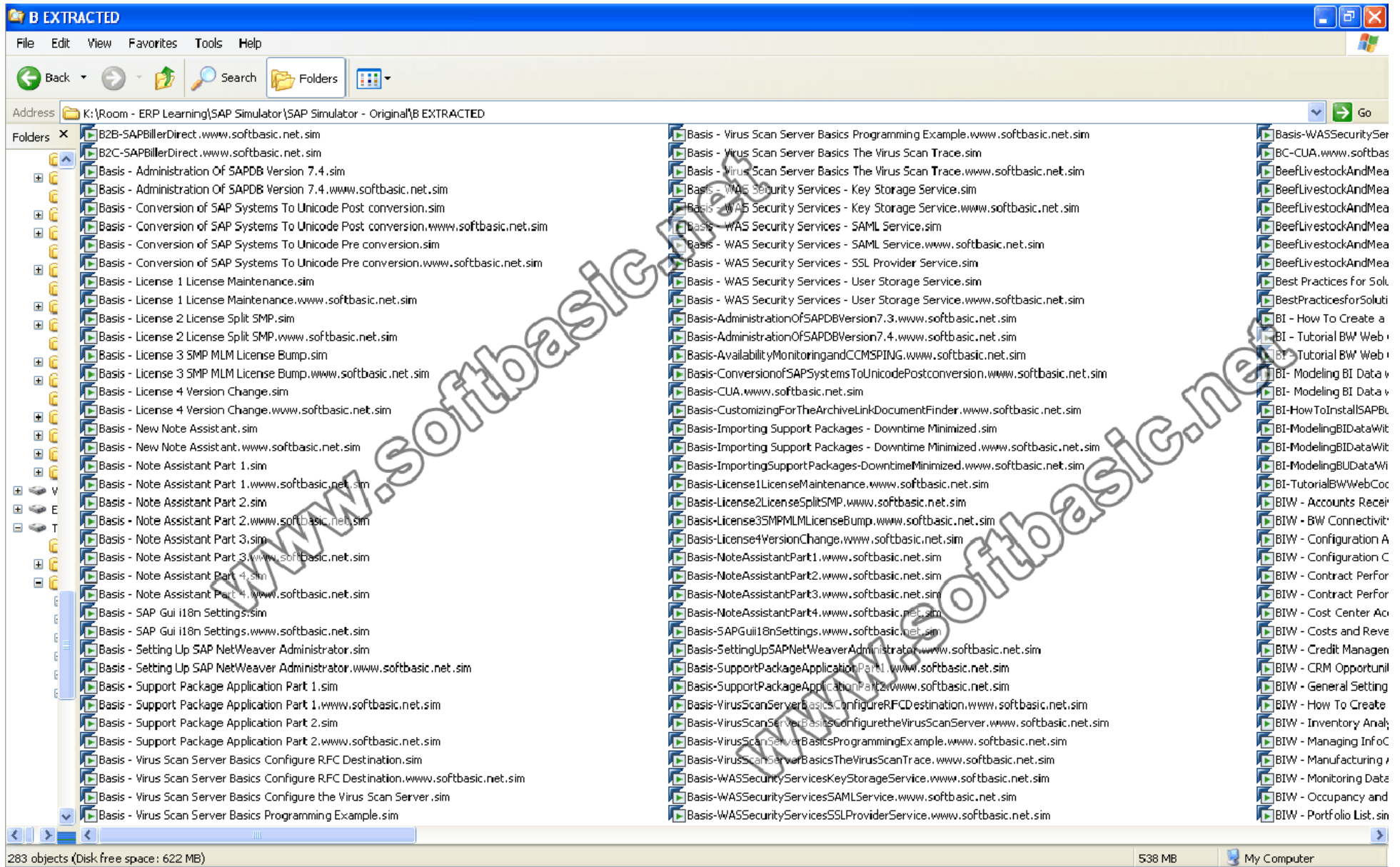


List Ribuan File SAP Simulator

Folder - A



Folder - B

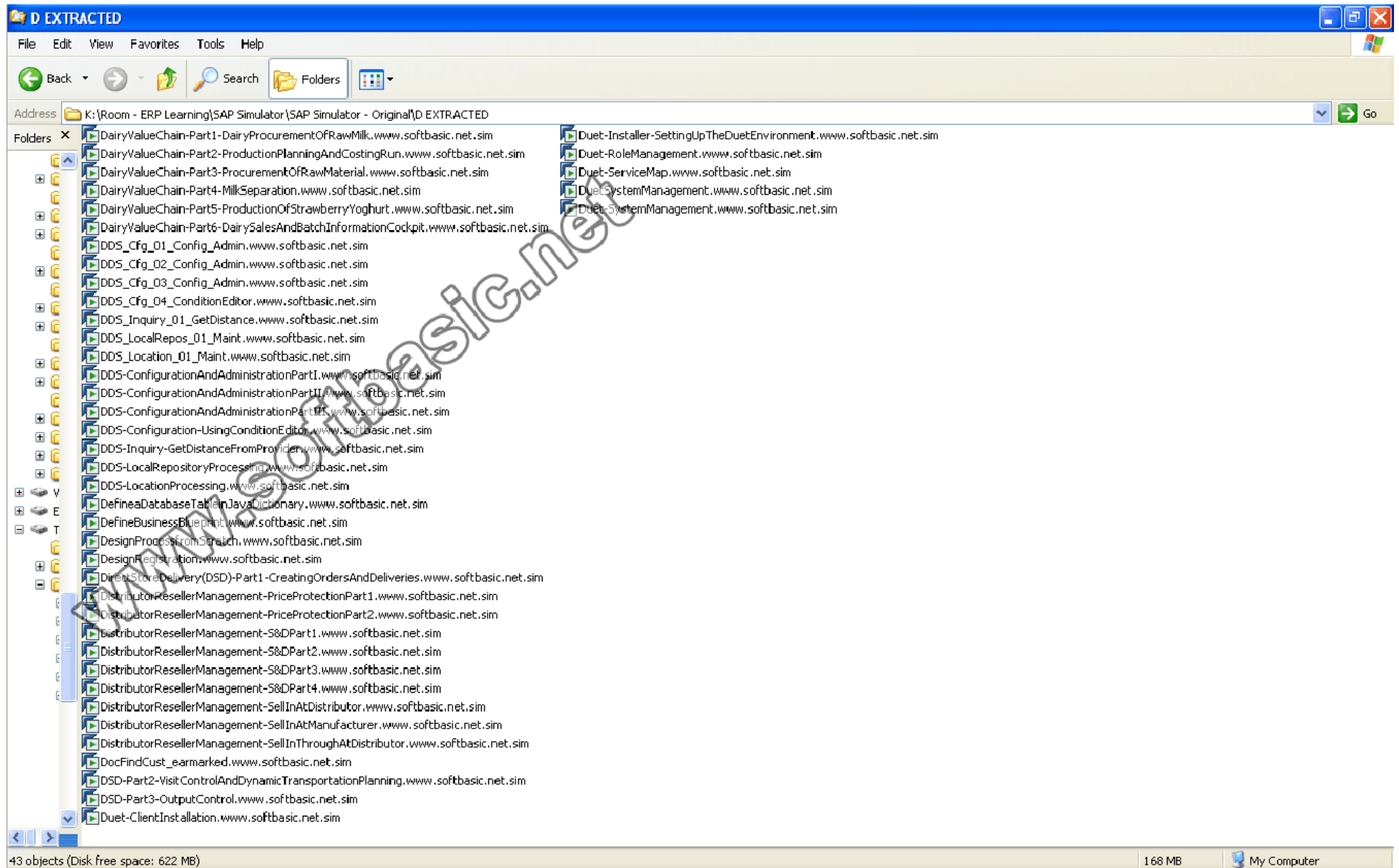


Folder – C

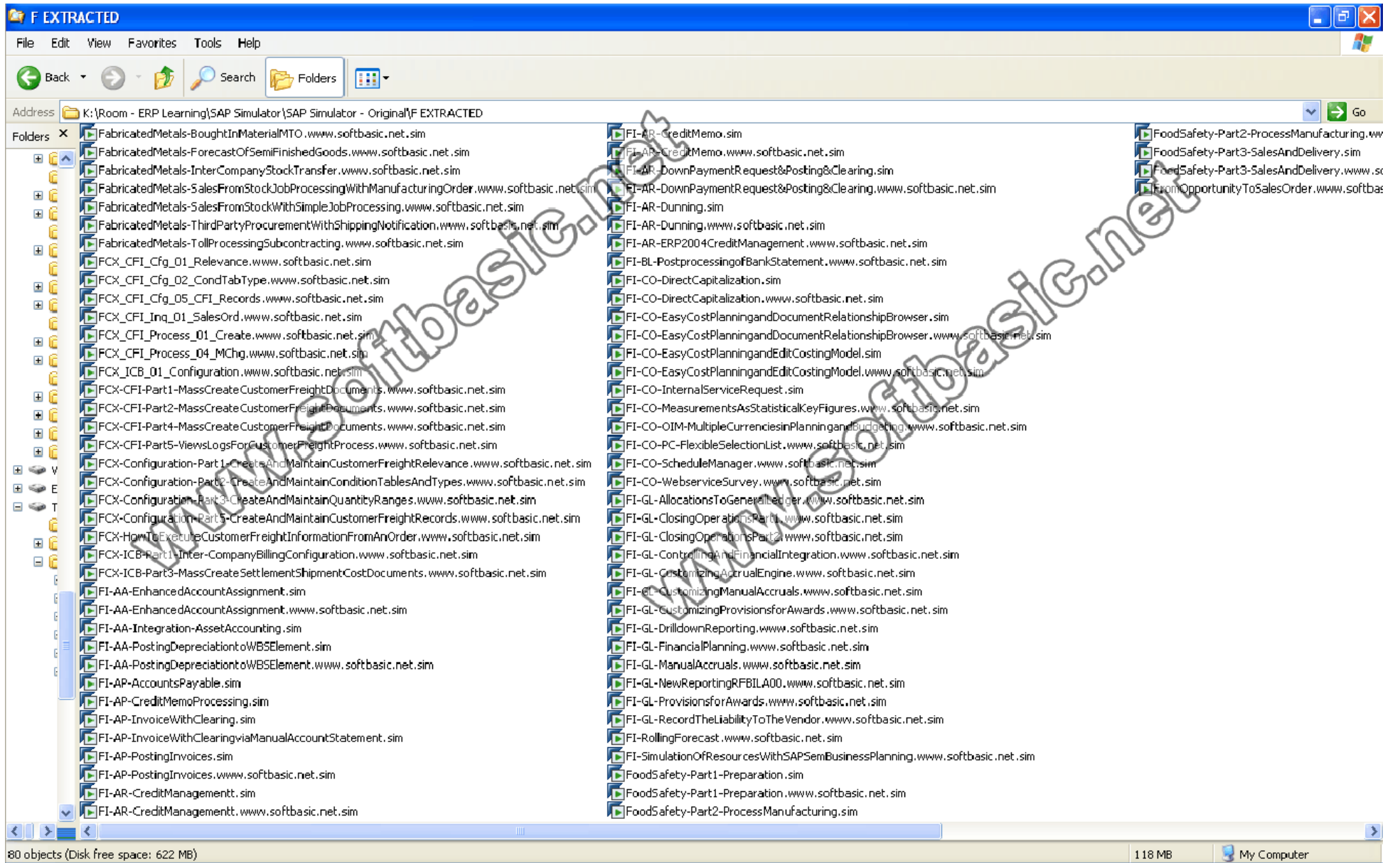
The screenshot shows a Windows Explorer window titled "C EXTRACTED". The address bar displays the path: "K:\Room - ERP Learning\SAP Simulator\SAP Simulator - Original\C EXTRACTED". The left sidebar shows a tree view of folders, with the main pane displaying a list of 62 simulation files. The files are organized into two columns. The status bar at the bottom indicates "62 objects (Disk free space: 622 MB)", "92.9 MB", and "My Computer".

File Name	File Name
CA-CashJournal.www.softbasic.net.sim	ContractCallOff.www.softbasic.net.sim
CA-CreateCustomer101.sim	ConversionOfSAPSystemsToUnicodeDemo1.www.softbasic.net.sim
CA-CreateCustomer101.www.softbasic.net.sim	ConversionOfSAPSystemsToUnicodeDemo2.www.softbasic.net.sim
CA-CreateCustomerC6100.sim	CO-OIM-MultipleCurrenciesinPlanningandBudgeting.www.softbasic.net.sim
CA-CreateCustomerC6100.www.softbasic.net.sim	CO-PC-FlexibleSelectionList.www.softbasic.net.sim
CA-CreateVendor100.sim	CO-ScheduleManager.www.softbasic.net.sim
CA-CreateVendor100.www.softbasic.net.sim	CO-WebServiceSurvey.www.softbasic.net.sim
CA-CreateVendorC7101.sim	cProjects-cProjects3.0ControlPlan.www.softbasic.net.sim
CA-CreateVendorC7101.www.softbasic.net.sim	cProjects-cProjects3.00Overview.www.softbasic.net.sim
CA-CustomBehaviorModelling.sim	cProjects-CreatingACollaborationWithcProjects.www.softbasic.net.sim
CA-CustomizingDistribution.sim	cProjects-CreatingAProjectWithcProjects.www.softbasic.net.sim
CA-CustomizingDistribution.www.softbasic.net.sim	Create Key for SAP Software.www.softbasic.net.sim
CA-CustomizingExchangeRateMaintenance.sim	CreateBCSets.www.softbasic.net.sim
CA-CustomizingExchangeRateMaintenance.www.softbasic.net.sim	CreatingABCSet.www.softbasic.net.sim
CA-CustomizingForTheArchiveLinkDocumentFinder.sim	CreatingACATTProcedure.SIM
CA-CustomizingForTheArchiveLinkDocumentFinder.www.softbasic.net.sim	CreatingALogicForACATTStructure.www.softbasic.net.sim
CA-DataMediumExchangeEngine.sim	CreatingATestProcedureWithCATT.www.softbasic.net.sim
CA-DataMediumExchangeEngine.www.softbasic.net.sim	CreatingInputParametersForACATTProcedure.www.softbasic.net.sim
CA-DisputeManagement.sim	CreationofInstallationUpgradeKeyforSAPSoftware.www.softbasic.net.sim
CA-DisputeManagement.www.softbasic.net.sim	CRMScenariosandImplementationwithSAPSolutionManager.www.softbasic.net.sim
CA-HowtoCreateaComponentView.sim	CSAAndCSR.www.softbasic.net.sim
CA-HowtoCreateaComponentView.www.softbasic.net.sim	CUA.SIM
CampaignExecution.www.softbasic.net.sim	CustomerAnalyticsAndDataMining.www.softbasic.net.sim
CA-SettingUpCustomizingDistribution&Comp.www.softbasic.net.sim	CustomizingDistribution.www.softbasic.net.sim
CA-SettingUpCustomizingDistributionandComparison.sim	
CA-SettingUpCustomizingDistributionandComparison.www.softbasic.net.sim	
CATT-CreatingACATTProcedure.SIM	
CA-UsingTheCustomizingScout.sim	
CA-UsingTheCustomizingScout.www.softbasic.net.sim	
CentralSystemAdministration-Customizing.www.softbasic.net.sim	
CentralSystemAdministration-HandlingOfTasks.www.softbasic.net.sim	
ChangeBCSets.www.softbasic.net.sim	
ChangeControlofDocuments-CheckInandCheckOut-Functionality.www.softbasic.net.sim	
ChangeRequestManagement-UrgentCorrection.www.softbasic.net.sim	
ClientInstallation.www.softbasic.net.sim	
ComparingCustomizingwiththeCustomizingScout.www.softbasic.net.sim	
ComplaintsAndReturnsManagement.www.softbasic.net.sim	
ConfiguringGPFforInteractiveForms.www.softbasic.net.sim	

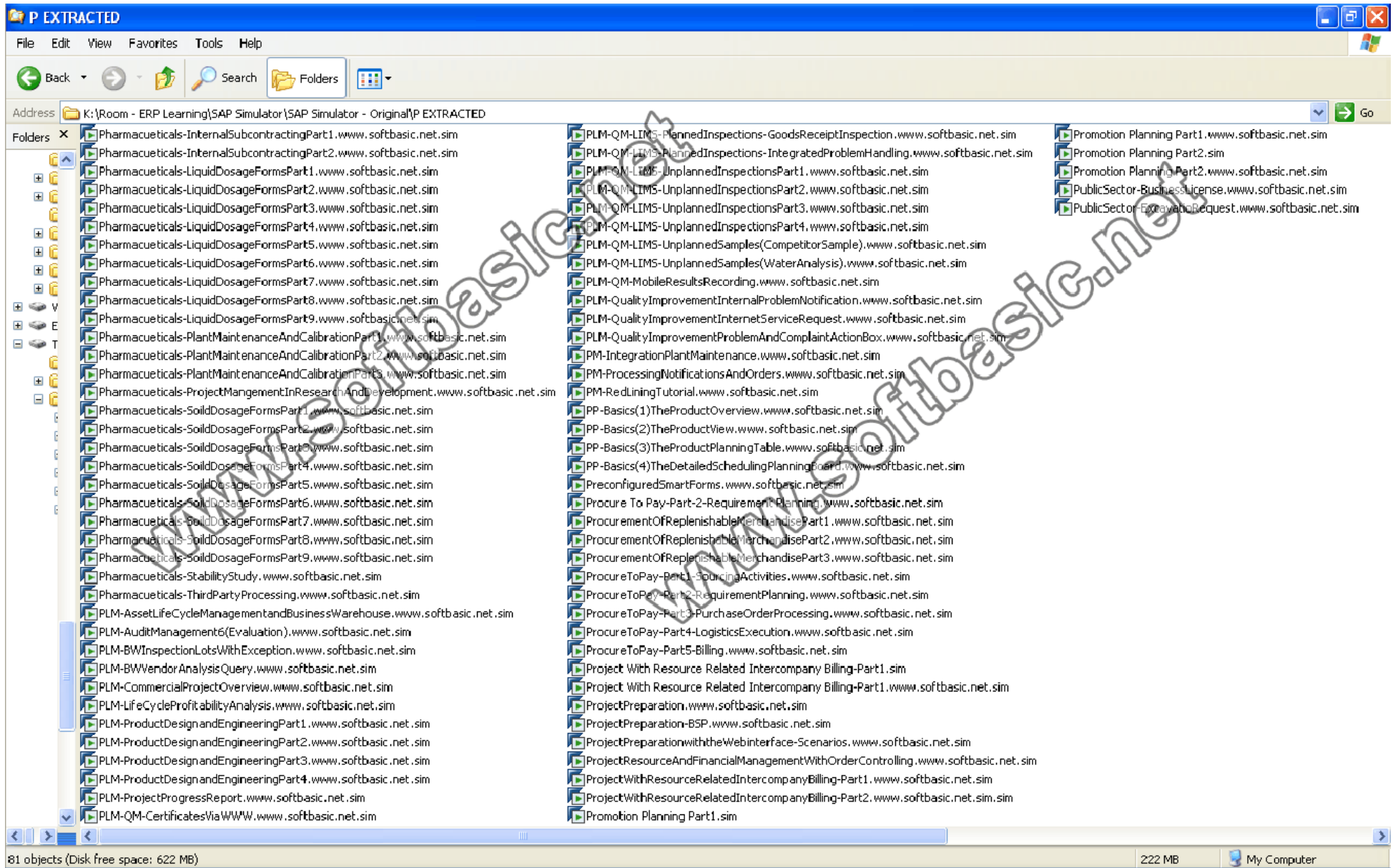
Folder – D



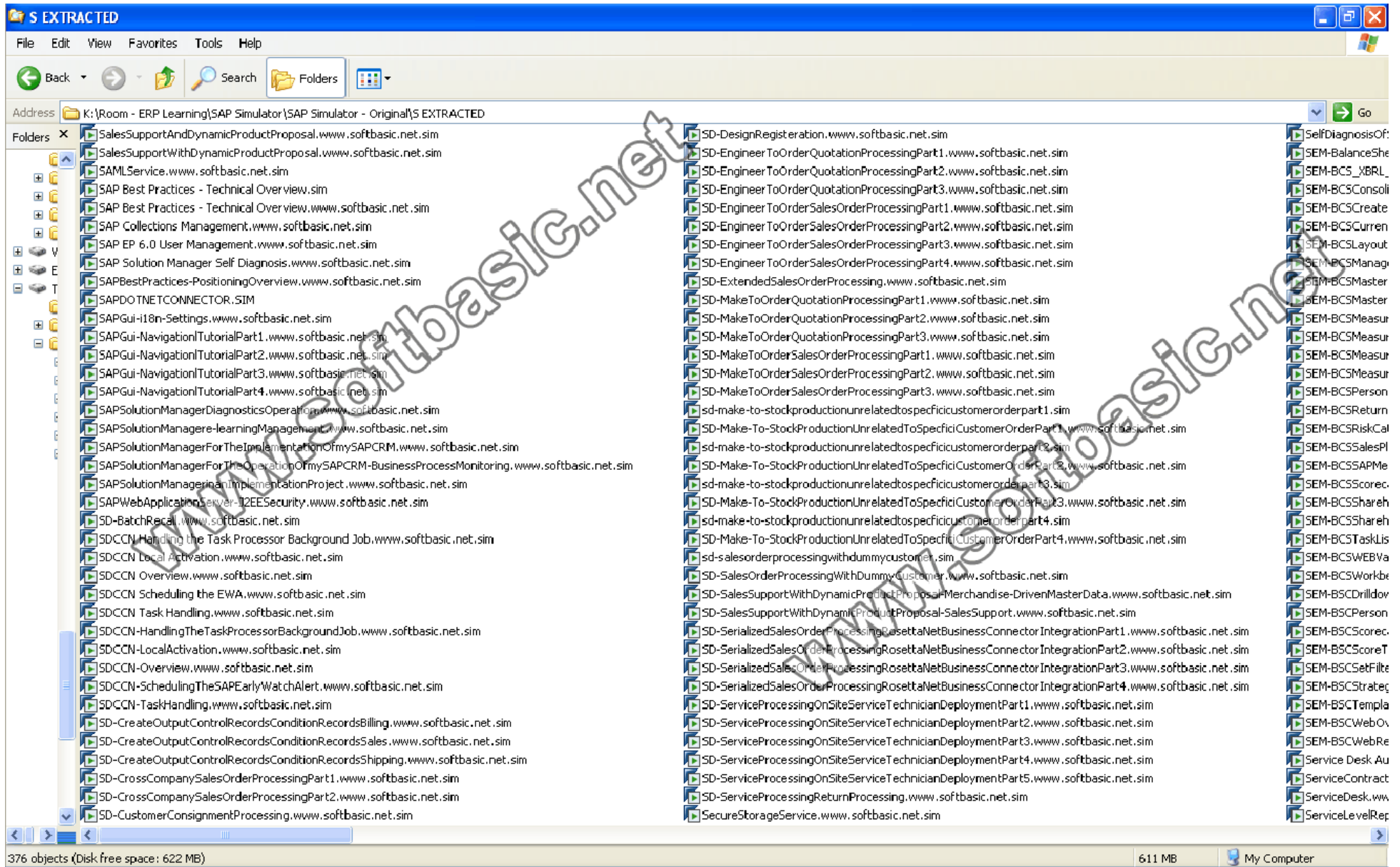
Folder - F



Folder – P



Folder – S



Daftar Lengkap File SAP Simulator

Volume name is SAP Simulator

Directory of K:\Room - ERP Learning\SAP Simulator\SAP Simulator - Original\A EXTRACTED\
=====

- 001. ABAP- Efficient ABAP Programming.sim
- 002. ABAP- Efficient ABAP Programming.www.softbasic.net.sim
- 003. ABAP-Advanced ABAP Object Programming.sim
- 004. ABAP-Advanced ABAP Object Programming.www.softbasic.net.sim
- 005. ABAP-AnalyzingABAPPrograms.www.softbasic.net.sim
- 006. ABAP-BuildingWebServicesWithABAPPart1.sim
- 007. ABAP-BuildingWebServicesWithABAPPart1.www.softbasic.net.sim
- 008. ABAP-BuildingWebServicesWithABAPPart2.sim
- 009. ABAP-BuildingWebServicesWithABAPPart2.www.softbasic.net.sim
- 010. ABAP-BuildingWebServicesWithABAPPart3.sim
- 011. ABAP-BuildingWebServicesWithABAPPart3.www.softbasic.net.sim
- 012. ABAP-BuildingWebServicesWithABAPPart4.sim
- 013. ABAP-BuildingWebServicesWithABAPPart4.www.softbasic.net.sim
- 014. ABAP-TheNewABAPDebugger-AnIntroduction.www.softbasic.net.sim
- 015. Accounting-ActualPostinginOverheadCostCenter.www.softbasic.net.sim
- 016. Accounting-Appropriation Requests.sim
- 017. Accounting-Appropriation Requests.www.softbasic.net.sim
- 018. Accounting-AppropriationRequests.www.softbasic.net.sim
- 019. Accounting-Asset Management Periodic Processing.sim
- 020. Accounting-Asset Management Periodic Processing.www.softbasic.net.sim
- 021. Accounting-Asset Management.sim
- 022. Accounting-Asset Management.www.softbasic.net.sim
- 023. Accounting-AssetManagement.www.softbasic.net.sim
- 024. Accounting-AssetManagementPeriodicProcessing.www.softbasic.net.sim
- 025. Accounting-Cash Collection With SAP Collections Management3.0.sim
- 026. Accounting-Cash Collection With SAP Collections Management3.0.www.softbasic.net.sim
- 027. Accounting-Cash Journal.www.softbasic.net.sim
- 028. Accounting-CashCollectionWithSAPCollectionsManagement3.0.www.softbasic.net.sim
- 029. Accounting-CashJournal.www.softbasic.net.sim
- 030. Accounting-CashManagement.www.softbasic.net.sim
- 031. Accounting-CostCenterPlanning.www.softbasic.net.sim
- 032. Accounting-IncomingPayment.sim
- 033. Accounting-IncomingPayment.www.softbasic.net.sim

034. Accounting-PeriodEndClosinginOverheadCenter.www.softbasic.net.sim
035. Accounting-PlanningiOverheadCostCenter.www.softbasic.net.sim
036. Accounting-ProfitCenterReporting.www.softbasic.net.sim
037. Accounting-TransferPCABalanceSheetValues.www.softbasic.net.sim
038. Accounting-TravelExpenses.www.softbasic.net.sim
039. AccountManagementAndActivityManagement.sim
040. AccountManagementAndActivityManagement.www.softbasic.net.sim
041. Actual Posting in Overhead Cost Center.sim
042. Actual Posting in Overhead Cost Center.www.softbasic.net.sim
043. ADS-AdobeDesignerBasics.sim
044. ADS-AdobeDesignerBasics.www.softbasic.net.sim
045. ADS-ConfigureGPForInteractiveForms.sim
046. ADS-ConfigureGPForInteractiveForms.www.softbasic.net.sim
047. ADS-CreatingaPrintForminDesigner.sim
048. ADS-CreatingaPrintForminDesigner.www.softbasic.net.sim
049. AFS-AllocationAgainstFutureReceipts.www.softbasic.net.sim
050. AFS-ContractCallOff.www.softbasic.net.sim
051. AFS-CSAAndCSR.www.softbasic.net.sim
052. AFS-ManagementTool.www.softbasic.net.sim
053. AFS-PurchaseOrderSplit.www.softbasic.net.sim
054. AFS-ReschedulingRun.www.softbasic.net.sim
055. AFS-SubstitutionInSalesOrderManagement.www.softbasic.net.sim
056. AIS - Audit Management (Execution).sim
057. AIS - Audit Management (Execution).www.softbasic.net.sim
058. AIS - Audit Management (Preparation).sim
059. AIS - Audit Management (Preparation).www.softbasic.net.sim
060. AIS - Audit Management 1 (Question Lists).sim
061. AIS - Audit Management 1 (Question Lists).www.softbasic.net.sim
062. AIS - Audit Management 2 (Audit Plans).sim
063. AIS - Audit Management 2 (Audit Plans).www.softbasic.net.sim
064. AIS - Audit Management 3 (Audit Question Lists).sim
065. AIS - Audit Management 3 (Audit Question Lists).www.softbasic.net.sim
066. AIS - Audit Management 4 (Processing Audits).sim
067. AIS - Audit Management 4 (Processing Audits).www.softbasic.net.sim
068. AIS - Audit Management 5 (Corrective Preventive Actions).sim
069. AIS - Audit Management 5 (Corrective Preventive Actions).www.softbasic.net.sim
070. AIS - Audit Management 6 (Evaluation).sim
071. AIS - Audit Management 6 (Evaluation).www.softbasic.net.sim

- 072. AIS - Audit Management 7 (Customizing).sim
- 073. AIS - Audit Management 7 (Customizing).www.softbasic.net.sim
- 074. AIS - Tutorial - Audit Information System.sim
- 075. AIS - Tutorial - Audit Information System.www.softbasic.net.sim
- 076. AIS-AuditManagement(Execution).www.softbasic.net.sim
- 077. AIS-AuditManagement(Preparation).www.softbasic.net.sim
- 078. AIS-AuditManagement1(QuestionLists).www.softbasic.net.sim
- 079. AIS-AuditManagement2(AuditPlans).www.softbasic.net.sim
- 080. AIS-AuditManagement3(AuditQuestionLists).www.softbasic.net.sim
- 081. AIS-AuditManagement4(ProcessingAudits).www.softbasic.net.sim
- 082. AIS-AuditManagement6(Evaluation).www.softbasic.net.sim
- 083. AIS-AuditManagement7(Customizing).www.softbasic.net.sim
- 084. AIS-Tutorial-AuditInformationSystem.www.softbasic.net.sim
- 085. ALL-in-OneRetail-PromotionPlanningPart1.www.softbasic.net.sim
- 086. AllocationAgainstFutureReceipts.www.softbasic.net.sim
- 087. Appropriation Request.www.softbasic.net.sim
- 088. ARunOptimizer.www.softbasic.net.sim
- 089. Asset Management.www.softbasic.net.sim
- 090. AssetLifeCycle-10InternetOrder.www.softbasic.net.sim
- 091. AssetLifeCycle-20Notification&OrderProcessing.www.softbasic.net.sim
- 092. AssetLifeCycle-30PurchaseOrderProcessing.www.softbasic.net.sim
- 093. AssetLifeCycle-40GoodsReceipt&SpoolRequest.www.softbasic.net.sim
- 094. AssetLifeCycle-50GoodsOutput.www.softbasic.net.sim
- 095. AssetLifeCycle-60OrderProcessing.www.softbasic.net.sim
- 096. AssetLifeCycle-CreateARequest.www.softbasic.net.sim
- 097. AssetLifeCycle-CrossApplicationTimeSheetAsAnInternetService.www.softbasic.net.sim
- 098. AssetLifeCycle-InternetServiceRequest.www.softbasic.net.sim
- 099. AssetLifeCycle-MalfunctionReport.www.softbasic.net.sim
- 100. AssetLifeCycle-MobileInspectionWithWAPMobilePhone.www.softbasic.net.sim
- 101. AuthorizationsinSAPSolutionManager.www.softbasic.net.sim
- 102. Autoreaction-ServiceDesk.www.softbasic.net.sim
- 103. Availability monitorig with CCMSPING.www.softbasic.net.sim
- 104. Availability Monitoring of HTML Pages with GRMG Lite.www.softbasic.net.sim

Volume name is SAP Simulator

Directory of K:\Room - ERP Learning\SAP Simulator\SAP Simulator - Original\B EXTRACTED\
=====

001. B2B-SAPBillerDirect.www.softbasic.net.sim
002. B2C-SAPBillerDirect.www.softbasic.net.sim
003. Basis - Administration Of SAPDB Version 7.4.sim
004. Basis - Administration Of SAPDB Version 7.4.www.softbasic.net.sim
005. Basis - Conversion of SAP Systems To Unicode Post conversion.sim
006. Basis - Conversion of SAP Systems To Unicode Post conversion.www.softbasic.net.sim
007. Basis - Conversion of SAP Systems To Unicode Pre conversion.sim
008. Basis - Conversion of SAP Systems To Unicode Pre conversion.www.softbasic.net.sim
009. Basis - License 1 License Maintenance.sim
010. Basis - License 1 License Maintenance.www.softbasic.net.sim
011. Basis - License 2 License Split SMP.sim
012. Basis - License 2 License Split SMP.www.softbasic.net.sim
013. Basis - License 3 SMP MLM License Bump.sim
014. Basis - License 3 SMP MLM License Bump.www.softbasic.net.sim
015. Basis - License 4 Version Change.sim
016. Basis - License 4 Version Change.www.softbasic.net.sim
017. Basis - New Note Assistant.sim
018. Basis - New Note Assistant.www.softbasic.net.sim
019. Basis - Note Assistant Part 1.sim
020. Basis - Note Assistant Part 1.www.softbasic.net.sim
021. Basis - Note Assistant Part 2.sim
022. Basis - Note Assistant Part 2.www.softbasic.net.sim
023. Basis - Note Assistant Part 3.sim
024. Basis - Note Assistant Part 3.www.softbasic.net.sim
025. Basis - Note Assistant Part 4.sim
026. Basis - Note Assistant Part 4.www.softbasic.net.sim
027. Basis - SAP Gui i18n Settings.sim
028. Basis - SAP Gui i18n Settings.www.softbasic.net.sim
029. Basis - Setting Up SAP NetWeaver Administrator.sim
030. Basis - Setting Up SAP NetWeaver Administrator.www.softbasic.net.sim
031. Basis - Support Package Application Part 1.sim
032. Basis - Support Package Application Part 1.www.softbasic.net.sim
033. Basis - Support Package Application Part 2.sim
034. Basis - Support Package Application Part 2.www.softbasic.net.sim
035. Basis - Virus Scan Server Basics Configure RFC Destination.sim
036. Basis - Virus Scan Server Basics Configure RFC Destination.www.softbasic.net.sim
037. Basis - Virus Scan Server Basics Configure the Virus Scan Server.sim
038. Basis - Virus Scan Server Basics Programming Example.sim

039. Basis - Virus Scan Server Basics Programming Example.www.softbasic.net.sim
040. Basis - Virus Scan Server Basics The Virus Scan Trace.www.softbasic.net.sim
041. Basis - Virus Scan Server Basics The Virus Scan Trace.www.softbasic.net.sim
042. Basis - WAS Security Services - Key Storage Service.www.softbasic.net.sim
043. Basis - WAS Security Services - Key Storage Service.www.softbasic.net.sim
044. Basis - WAS Security Services - SAML Service.www.softbasic.net.sim
045. Basis - WAS Security Services - SAML Service.www.softbasic.net.sim
046. Basis - WAS Security Services - SSL Provider Service.www.softbasic.net.sim
047. Basis - WAS Security Services - User Storage Service.www.softbasic.net.sim
048. Basis - WAS Security Services - User Storage Service.www.softbasic.net.sim
049. Basis-AdministrationOfSAPDBVersion7.3.www.softbasic.net.sim
050. Basis-AdministrationOfSAPDBVersion7.4.www.softbasic.net.sim
051. Basis-AvailabiltyMonitoringandCCMSPING.www.softbasic.net.sim
052. Basis-ConversionofSAPSystemsToUnicodePostconversion.www.softbasic.net.sim
053. Basis-CUA.www.softbasic.net.sim
054. Basis-CustomizingForTheArchiveLinkDocumentFinder.www.softbasic.net.sim
055. Basis-Importing Support Packages - Downtime Minimized.www.softbasic.net.sim
056. Basis-Importing Support Packages - Downtime Minimized.www.softbasic.net.sim
057. Basis-ImportingSupportPackages-DowntimeMinimized.www.softbasic.net.sim
058. Basis-License1LicenseMaintenance.www.softbasic.net.sim
059. Basis-License2LicenseSplitSMP.www.softbasic.net.sim
060. Basis-License3SMPMLMLicenseBump.www.softbasic.net.sim
061. Basis-License4VersionChange.www.softbasic.net.sim
062. Basis-NoteAssistantPart1.www.softbasic.net.sim
063. Basis-NoteAssistantPart2.www.softbasic.net.sim
064. Basis-NoteAssistantPart3.www.softbasic.net.sim
065. Basis-NoteAssistantPart4.www.softbasic.net.sim
066. Basis-SAPGui18nSettings.www.softbasic.net.sim
067. Basis-SettingUpSAPNetWeaverAdministrator.www.softbasic.net.sim
068. Basis-SupportPackageApplicationPart1.www.softbasic.net.sim
069. Basis-SupportPackageApplicationPart2.www.softbasic.net.sim
070. Basis-VirusScanServerBasicsConfigureRFCDestination.www.softbasic.net.sim
071. Basis-VirusScanServerBasicsConfiguretheVirusScanServer.www.softbasic.net.sim
072. Basis-VirusScanServerBasicsProgrammingExample.www.softbasic.net.sim
073. Basis-VirusScanServerBasicsTheVirusScanTrace.www.softbasic.net.sim
074. Basis-WASSecurityServicesKeyStorageService.www.softbasic.net.sim
075. Basis-WASSecurityServicesSAMLService.www.softbasic.net.sim
076. Basis-WASSecurityServicesSSLProviderService.www.softbasic.net.sim

077. Basis-WASSecurityServicesUserStorageService.www.softbasic.net.sim
078. BC-CUA.www.softbasic.net.sim
079. BeefLivestockAndMeat-Part1-ProductionPlanning.www.softbasic.net.sim
080. BeefLivestockAndMeat-Part2-SlaughterBeef.www.softbasic.net.sim
081. BeefLivestockAndMeat-Part3-QuarteringAndPrimalCutting.www.softbasic.net.sim
082. BeefLivestockAndMeat-Part4-FinalCutting.www.softbasic.net.sim
083. BeefLivestockAndMeat-Part5-SecondaryProcessing.www.softbasic.net.sim
084. BeefLivestockAndMeat-Part6-HUMPackagingAndBatchInformationCockpit.www.softbasic.net.sim
085. Best Practices for Solution Management.www.softbasic.net.sim
086. BestPracticesforSolutionManagement.www.softbasic.net.sim
087. BI - How To Create a Callable Object BI Application.sim
088. BI - Tutorial BW Web Cockpit - Department Manager.sim
089. BI - Tutorial BW Web Cockpit.sim
090. BI- Modeling BI Data with Visual Composer Part 1.sim
091. BI- Modeling BI Data with Visual Composer Part 2.sim
092. BI-HowToInstallSAPBusinessOneIntegrationTechnology.www.softbasic.net.sim
093. BI-ModelingBIDataWithVisualComposerPart1.www.softbasic.net.sim
094. BI-ModelingBIDataWithVisualComposerPart2.www.softbasic.net.sim
095. BI-ModelingBUDataWithVisualComposer-SystemDemol.www.softbasic.net.sim
096. BI-TutorialBWWebCockpit.www.softbasic.net.sim
097. BIW - Accounts Receivable Analysis In BW Reporting.sim
098. BIW - BW Connectivity.sim
099. BIW - Configuration Assigning a Data Source to an Info Source.sim
100. BIW - Configuration Creating an InfoPackage for Transaction Data.sim
101. BIW - Contract Performance and Costs and Revenues.sim
102. BIW - Contract Performance.sim
103. BIW - Cost Center Accounting Analysis.sim
104. BIW - Costs and Revenues.sim
105. BIW - Credit Management Cockpit.sim
106. BIW - CRM Opportunites Analysis.sim
107. BIW - General Settings for BW Integration.sim
108. BIW - How To Create a Callable Object BI Application.sim
109. BIW - Inventory Analysis in BW Reporting.sim
110. BIW - Managing InfoCubes.sim
111. BIW - Manufacturing Analysis in BW Reporting.sim
112. BIW - Monitoring Data Upload.sim
113. BIW - Occupancy and Vacancy.sim
114. BIW - Portfolio List.sim

115. BIW - Portfolio Overview.sim
116. BIW - Problem Analysis Workbook.sim
117. BIW - Purchasing Analysis in BW Reporting.sim
118. BIW - Sales Analysis Activating Queries and Uploading End User Role.sim
119. BIW - Sales Analysis Building Block 1.sim
120. BIW - Sales Analysis Building Block 2.sim
121. BIW - Sales Analysis in BW Reporting.sim
122. BIW - Sales Analysis Loading Data.sim
123. BIW - Scheduling Data Upload Periodically.sim
124. BIW - Tutorial BW Web Cockpit - Department Manager.sim
125. BIW - Tutorial BW Web Cockpit.sim
126. BIW - Vacancy Comparison.sim
127. BIW - Vendor Analysis Query.sim
128. BIW-BuildingBlock1SalesAnalysis.www.softbasic.net.sim
129. BIW-BWConnectivity.www.softbasic.net.sim
130. BIW-ConfigurationCreatingAnInfoPackageForTransactionData.www.softbasic.net.sim
131. BIW-ContractPerformance.www.softbasic.net.sim
132. BIW-CostCenterAccountingAnalysis.www.softbasic.net.sim
133. BIW-CostsAndRevenues.www.softbasic.net.sim
134. BIW-CRMOpportunitiesAnalysis.www.softbasic.net.sim
135. BIW-GeneralSettingsforBWIntegration.www.softbasic.net.sim
136. BIW-ManagingInfoCubes.www.softbasic.net.sim
137. BIW-ManufacturingAnalysisInBWReporting.www.softbasic.net.sim
138. BIW-OccupancyAndVacancy.www.softbasic.net.sim
139. BIW-PortfolioList.www.softbasic.net.sim
140. BIW-PortfolioOverview.www.softbasic.net.sim
141. BIW-PurchasingAnalysisInBWReporting.www.softbasic.net.sim
142. BIW-SalesAnalysisActivatingQueriesAndUploadingEndUserRole.www.softbasic.net.sim
143. BIW-SchedulingDataUploadPeriodically.www.softbasic.net.sim
144. BIW-TutorialBWWebCockpit.www.softbasic.net.sim
145. BIW-VacancyComparison.www.softbasic.net.sim
146. BIW-VendorAnalysisQuery.www.softbasic.net.sim
147. BO-HowToInstallSAPBusinessOneIntegrationTechnology.www.softbasic.net.sim
148. BP-Automotive-NewVehicleSales.www.softbasic.net.sim
149. BP-Automotive-PartsCaseSales.www.softbasic.net.sim
150. BP-Automotive-VehicleService.www.softbasic.net.sim
151. BP-Baseline-CreateCustomer101.www.softbasic.net.sim
152. BP-Baseline-CreateCustomerC6100.www.softbasic.net.sim

153. BP-Baseline-CreateEmptiesMaterialC60100.www.softbasic.net.sim
154. BP-Baseline-CreateVendor100.www.softbasic.net.sim
155. BP-Baseline-CreateVendorC7101.www.softbasic.net.sim
156. BP-Baseline-CreationOfEmptiesMaterialC60100.www.softbasic.net.sim
157. BP-Baseline-CreationOfFinishedMaterialC10010.www.softbasic.net.sim
158. BP-Baseline-CreationOfNon-StockMaterialC90900.www.softbasic.net.sim
159. BP-Baseline-CreationOfOutputControlRecords(ConditionRecordsBilling).www.softbasic.net.sim
160. BP-Baseline-CreationOfOutputControlRecords(ConditionRecordsSales).www.softbasic.net.sim
161. BP-Baseline-CreationOfOutputControlRecords(ConditionRecordsShipping).www.softbasic.net.sim
162. BP-Baseline-CreationOfPackagingMaterialC50010.www.softbasic.net.sim
163. BP-Baseline-CreationOfPipelineMaterialC45000.www.softbasic.net.sim
164. BP-Baseline-CreationOfSemifinishedMaterialB1110.www.softbasic.net.sim
165. BP-Baseline-CreationOfSemifinishedMaterialB1111.www.softbasic.net.sim
166. BP-Baseline-CreationOfTradingMaterialC10050.www.softbasic.net.sim
167. BP-Baseline-CustomizingDistribution.www.softbasic.net.sim
168. BP-Baseline-PersonalizationAssistant.www.softbasic.net.sim
169. BP-Chemicals-Q100-Relabeling.SIM
170. BP-Chemicals-Q101-StorageTankManagement.SIM
171. BP-Chemicals-Q102-ElectronicCommerce.SIM
172. BP-Chemicals-Q103-Vendor-ManagedInventory.SIM
173. BP-Chemicals-Q80-ProcurementofMaterialsandServices-Part1.SIM
174. BP-Chemicals-Q80-ProcurementofMaterialsandServices-Part2.SIM
175. BP-Chemicals-Q81-ManufacturingExecution-Part1.SIM
176. BP-Chemicals-Q81-ManufacturingExecution-Part2.SIM
177. BP-Chemicals-Q81-ManufacturingExecution-Part3.SIM
178. BP-Chemicals-Q82-SD(incl>ReturnsReturnablesandRebates)-Part1.SIM
179. BP-Chemicals-Q82-SD(incl>ReturnsReturnablesandRebates)-Part2.SIM
180. BP-Chemicals-Q83-Inter-andIntra-CompanyProcesses.SIM
181. BP-Chemicals-Q86-Subcontracting.SIM
182. BP-Chemicals-Q87-Blending.SIM
183. BP-Chemicals-Q88-Repackaging.SIM
184. BP-Chemicals-Q89-TankTailerProcessing.SIM
185. BP-Chemicals-Q90-SamplesProcessing.SIM
186. BP-Chemicals-Q91-ForeignTrade.SIM
187. BP-Chemicals-Q92-ActiveIngredientProcessing.SIM
188. BP-Chemicals-Q93-PlantMaintenance.SIM
189. BP-Chemicals-Q94-DangerousGoodsManagement.SIM
190. BP-Chemicals-Q95-ProductSafety.SIM

191. BP-Chemicals-Q96-APOIndustrialHygiene&Safety.SIM
192. BP-Chemicals-Q97-RecipeManagement.SIM
193. BP-Chemicals-Q98-WasteManagement.SIM
194. BP-Chemicals-Q99-DrumHandling.SIM
195. BP-FabricatedMetals-BoughtInMaterialMTO.www.softbasic.net.SIM
196. BP-FabricatedMetals-ForecastOfSemiFinishedGoods.www.softbasic.net.sim
197. BP-FabricatedMetals-InterCompanyStockTransfer.www.softbasic.net.sim
198. BP-FabricatedMetals-SalesFromStockJobProcessingWithManufacturingOrder.www.softbasic.net.sim
199. BP-FabricatedMetals-SalesFromStockWithSimpleJobProcessing.www.softbasic.net.sim
200. BP-FabricatedMetals-ThirdPartyProcurementWithShippingNotification.www.softbasic.net.sim
201. BP-FabricatedMetals-TollProcessingSubcontracting.www.softbasic.net.sim
202. BP-FMCG-BeefLivestockAndMeat-Part1-ProductPlanning.www.softbasic.net.sim
203. BP-FMCG-BeefLivestockAndMeat-Part2-SlaughterBeef.www.softbasic.net.sim
204. BP-FMCG-BeefLivestockAndMeat-Part3-QuarteringAndPrimaCutting(ProductionLevell).sim
205. BP-FMCG-BeefLivestockAndMeat-Part5-SecondaryProcessing(ProductionLevelIV).www.softbasic.net.sim
206. BP-FMCG-BeefLivestockAndMeat-Part6-HandlingUnitManagement(HUM)&BIC.www.softbasic.net.sim
207. BP-FMCG-DairyValueChain-Part1-DairyProcurementOfRawMilk.www.softbasic.net.sim
208. BP-FMCG-DairyValueChain-Part2-ProductionPlanningAndCostingRun.www.softbasic.net.sim
209. BP-FMCG-DairyValueChain-Part3-ProcurementOfRawMaterial.www.softbasic.net.sim
210. BP-FMCG-DairyValueChain-Part4-MilkSeparation.www.softbasic.net.sim
211. BP-FMCG-DairyValueChain-Part5-ProductionOfStrawberryYogurt.www.softbasic.net.sim
212. BP-FMCG-DairyValueChain-Part6-DairySalesAndBatchInformationCockpit.www.softbasic.net.sim
213. BP-FMCG-DirectStoreDeliveryForBeverage-Part1-CreatingOrdersAndDeliveries.www.softbasic.net.sim
214. BP-FMCG-DirectStoreDeliveryForBeverage-Part3-OutputControl.www.softbasic.net.sim
215. BP-FMCG-DirectStoreDeliveryForBeverage-Part4-RouteAccounting.www.softbasic.net.sim
216. BP-FMCG-HUMForFoodSafety-Part1-Preparation.www.softbasic.net.sim
217. BP-FMCG-HUMForFoodSafety-Part2-ProcessManufacturing.www.softbasic.net.sim
218. BP-FMCG-HUMForFoodSafety-Part3-SalesAndDelivery.www.softbasic.net.sim
219. BPM-AlertHandling.www.softbasic.net.sim
220. BPM-BusinessProcessMaintenance.www.softbasic.net.sim
221. BPM-Configuration-AdvanceDeliverySeller-ActivateChangesinBuyersXIsystem.www.softbasic.net.sim
222. BPM-Configuration-AdvanceDeliverySeller-SetUpInterfaceDetermination.www.softbasic.net.sim
223. BPM-Configuration-AdvanceDeliverySeller-SetUpReceiverAgreement.www.softbasic.net.sim
224. BPM-Configuration-AdvanceDeliverySeller-SetUpReceiverDetermination.www.softbasic.net.sim
225. BPM-Configuration-AdvanceDeliverySeller-SetUpSenderAgreement.www.softbasic.net.sim
226. BPM-Configuration-InvoiceNotificationSeller-ActivateChangesinBuyersXIsystem.www.softbasic.net.sim
227. BPM-Configuration-InvoiceNotificationSeller-SetUpInterfaceDetermination.www.softbasic.net.sim
228. BPM-Configuration-InvoiceNotificationSeller-SetUpReceiverAgreement.www.softbasic.net.sim

229. BPM-Configuration-InvoiceNotificationSeller-SetUpReceiverDetermination.www.softbasic.net.sim
230. BPM-Configuration-InvoiceNotificationSeller-SetUpSenderAgreement.www.softbasic.net.sim
231. BPM-Configuration-PurchaseOrderChangeSeller-ActivateChangesinBuyersXlSystem.www.softbasic.net.sim
232. BPM-Configuration-PurchaseOrderChangeSeller-SetUpInterfaceDetermination.www.softbasic.net.sim
233. BPM-Configuration-PurchaseOrderChangeSeller-SetUpReceiverAgreement.www.softbasic.net.sim
234. BPM-Configuration-PurchaseOrderChangeSeller-SetUpReceiverDetermination.www.softbasic.net.sim
235. BPM-Configuration-PurchaseOrderChangeSeller-UpSenderAgreement.www.softbasic.net.sim
236. BPM-Configuration-PurchaseOrderConfirmationSeller-SetUpInterfaceDetermination.www.softbasic.net.sim
237. BPM-Configuration-PurchaseOrderConfirmationSeller-SetUpReceiverAgreement.www.softbasic.net.sim
238. BPM-Configuration-PurchaseOrderConfirmationSeller-SetUpReceiverDetermination.www.softbasic.net.sim
239. BPM-Configuration-PurchaseOrderConfirmationSeller-SetUpSenderAgreement.www.softbasic.net.sim
240. BPM-Configuration-PurchaseOrderRequestSeller-ActivateChangesinBuyersXlSystem.www.softbasic.net.sim
241. BPM-Configuration-PurchaseOrderRequestSeller-CreateCommunicationChannel.www.softbasic.net.sim
242. BPM-Configuration-PurchaseOrderRequestSeller-SetUpInterfaceDetermination.www.softbasic.net.sim
243. BPM-Configuration-PurchaseOrderRequestSeller-SetUpReceiverAgreement.www.softbasic.net.sim
244. BPM-Configuration-PurchaseOrderRequestSeller-SetUpReceiverDetermination.www.softbasic.net.sim
245. BPM-IDocAdapter-AssigntheRFCdestinationtotheALEPort.www.softbasic.net.sim
246. BPM-IDocAdapter-CreateanIDocAdapterPortforSellersERPsystem.www.softbasic.net.sim
247. BPM-IDocAdapter-MaintainIDocMetadataforSellersERPsystem.www.softbasic.net.sim
248. BPM-MaintainSystemLandscapesAndNewLogicalComponents.www.softbasic.net.sim
249. BPM-Navigation.www.softbasic.net.sim
250. BPM-R3orXltoPCK-FileIntegration.www.softbasic.net.sim
251. BPM-SystemLandscapeDirectory-DefiningBusinessSystemforSellersERPsystem.www.softbasic.net.sim
252. BPM-SystemLandscapeDirectory-DefiningBusinessSystemforSellersXlSystem.www.softbasic.net.sim
253. BPM-SystemLandscapeDirectory-DefiningTechnicalSystemforBuyersXlSystem.www.softbasic.net.sim
254. BPM-SystemLandscapeDirectory-DefiningTechnicalSystemforSellersXlSystem.www.softbasic.net.sim
255. BP-Pharmaceuticals-InternalSubcontractingPart1.www.softbasic.net.sim
256. BP-Pharmaceuticals-InternalSubcontractingPart2.www.softbasic.net.sim
257. BP-Pharmaceuticals-LiquidDosageFormsPart1.www.softbasic.net.sim
258. BP-Pharmaceuticals-LiquidDosageFormsPart2.www.softbasic.net.sim
259. BP-Pharmaceuticals-LiquidDosageFormsPart4.www.softbasic.net.sim
260. BP-Pharmaceuticals-LiquidDosageFormsPart5.www.softbasic.net.sim
261. BP-Pharmaceuticals-LiquidDosageFormsPart6.www.softbasic.net.sim
262. BP-Pharmaceuticals-LiquidDosageFormsPart7.www.softbasic.net.sim
263. BP-Pharmaceuticals-PlantMaintenanceAndCalibrationPart1.www.softbasic.net.sim
264. BP-Pharmaceuticals-PlantMaintenanceAndCalibrationPart2.www.softbasic.net.sim
265. BP-Pharmaceuticals-PlantMaintenanceAndCalibrationPart3.www.softbasic.net.sim
266. BP-Pharmaceuticals-ProjectMangementInResearchAndDevelopment.www.softbasic.net.sim

- 267. BP-Pharmacueticals-SoildDosageFormsPart1.www.softbasic.net.sim
- 268. BP-Pharmacueticals-SoildDosageFormsPart2.www.softbasic.net.sim
- 269. BP-Pharmacueticals-SoildDosageFormsPart3.www.softbasic.net.sim
- 270. BP-Pharmacueticals-SoildDosageFormsPart4.www.softbasic.net.sim
- 271. BP-Pharmacueticals-SoildDosageFormsPart5.www.softbasic.net.sim
- 272. BP-Pharmacueticals-SoildDosageFormsPart6.www.softbasic.net.sim
- 273. BP-Pharmacueticals-SoildDosageFormsPart7.www.softbasic.net.sim
- 274. BP-Pharmacueticals-SoildDosageFormsPart8.www.softbasic.net.sim
- 275. BP-Pharmacueticals-SoildDosageFormsPart9.www.softbasic.net.sim
- 276. BP-Pharmacueticals-StabilityStudy.www.softbasic.net.sim
- 277. BP-Pharmacueticals-ThirdPartyProcessing.www.softbasic.net.sim
- 278. BPs-CustomizingDistribution.www.softbasic.net.sim
- 279. BPs-HowtoCreateaComponentView.www.softbasic.net.sim
- 280. BPs-SettingUpCustomizingDistributionandComparison.www.softbasic.net.sim
- 281. BSP Web Application for Solution Manager.www.softbasic.net.sim
- 282. BSPWebApplicationForSAPSolutionManager.www.softbasic.net.sim
- 283. Business Process Management.sim

Volume name is SAP Simulator

Directory of K:\Room - ERP Learning\SAP Simulator\SAP Simulator - Original\C EXTRACTED\

=====

- 001. CA-CashJournal.www.softbasic.net.sim
- 002. CA-CreateCustomer101.sim
- 003. CA-CreateCustomer101.www.softbasic.net.sim
- 004. CA-CreateCustomerC6100.sim
- 005. CA-CreateCustomerC6100.www.softbasic.net.sim
- 006. CA-CreateVendor100.sim
- 007. CA-CreateVendor100.www.softbasic.net.sim
- 008. CA-CreateVendorC7101.sim
- 009. CA-CreateVendorC7101.www.softbasic.net.sim
- 010. CA-CustomBehaviorModelling.sim
- 011. CA-CustomizingDistribution.sim
- 012. CA-CustomizingDistribution.www.softbasic.net.sim
- 013. CA-CustomizingExchangeRateMaintenance.sim
- 014. CA-CustomizingExchangeRateMaintenance.www.softbasic.net.sim
- 015. CA-CustomizingForTheArchiveLinkDocumentFinder.sim
- 016. CA-CustomizingForTheArchiveLinkDocumentFinder.www.softbasic.net.sim

017. CA-DataMediumExchangeEngine.sim
018. CA-DataMediumExchangeEngine.www.softbasic.net.sim
019. CA-DisputeManagement.sim
020. CA-DisputeManagement.www.softbasic.net.sim
021. CA-HowtoCreateaComponentView.sim
022. CA-HowtoCreateaComponentView.www.softbasic.net.sim
023. CampaignExecution.www.softbasic.net.sim
024. CA-SettingUpCustomizingDistribution&Comp.www.softbasic.net.sim
025. CA-SettingUpCustomizingDistributionandComparison.sim
026. CA-SettingUpCustomizingDistributionandComparison.www.softbasic.net.sim
027. CATT-CreatingACATTProcedure.SIM
028. CA-UsingTheCustomizingScout.sim
029. CA-UsingTheCustomizingScout.www.softbasic.net.sim
030. CentralSystemAdministration-Customizing.www.softbasic.net.sim
031. CentralSystemAdministration-HandlingOfTasks.www.softbasic.net.sim
032. ChangeBCSets.www.softbasic.net.sim
033. ChangeControlofDocuments-CheckInandCheckOut-Functionality.www.softbasic.net.sim
034. ChangeRequestManagement-UrgentCorrection.www.softbasic.net.sim
035. ClientInstallation.www.softbasic.net.sim
036. ComparingCustomizingwiththeCustomizingScout.www.softbasic.net.sim
037. ComplaintsAndReturnsManagement.www.softbasic.net.sim
038. ConfiguringGPforInteractiveForms.www.softbasic.net.sim
039. ContractCallOff.www.softbasic.net.sim
040. ConversionOfSAPSystemsToUnicodeDemo1.www.softbasic.net.sim
041. ConversionOfSAPSystemsToUnicodeDemo2.www.softbasic.net.sim
042. CO-OIM-MultipleCurrenciesinPlanningandBudgeting.www.softbasic.net.sim
043. CO-PC-FlexibleSelectionList.www.softbasic.net.sim
044. CO-ScheduleManager.www.softbasic.net.sim
045. CO-WebserviceSurvey.www.softbasic.net.sim
046. cProjects-cProjects3.00Overview.www.softbasic.net.sim
047. cProjects-cProjects3.0ControlPlan.www.softbasic.net.sim
048. cProjects-CreatingACollaborationWithcProjects.www.softbasic.net.sim
049. cProjects-CreatingAProjectWithcProjects.www.softbasic.net.sim
050. Create Key for SAP Software.www.softbasic.net.sim
051. CreateBCSets.www.softbasic.net.sim
052. CreatingABCSet.www.softbasic.net.sim
053. CreatingACATTProcedure.SIM
054. CreatingALogicForACATTStructure.www.softbasic.net.sim

- 055. CreatingATestProcedureWithCATT.www.softbasic.net.sim
- 056. CreatingInputParametersForACATTProcedure.www.softbasic.net.sim
- 057. CreationofInstallationUpgradeKeyforSAPSoftware.www.softbasic.net.sim
- 058. CRMScenariosandImplementationwithSAPSolutionManager.www.softbasic.net.sim
- 059. CSAAndCSR.www.softbasic.net.sim
- 060. CUA.SIM
- 061. CustomerAnalyticsAndDataMining.www.softbasic.net.sim
- 062. CustomizingDistribution.www.softbasic.net.sim

Volume name is SAP Simulator

Directory of K:\Room - ERP Learning\SAP Simulator\SAP Simulator - Original\D EXTRACTED\
=====

- 001. DairyValueChain-Part1-DairyProcurementOfRawMilk.www.softbasic.net.sim
- 002. DairyValueChain-Part2-ProductionPlanningAndCostingRun.www.softbasic.net.sim
- 003. DairyValueChain-Part3-ProcurementOfRawMaterial.www.softbasic.net.sim
- 004. DairyValueChain-Part4-MilkSeparation.www.softbasic.net.sim
- 005. DairyValueChain-Part5-ProductionOfStrawberryYoghurt.www.softbasic.net.sim
- 006. DairyValueChain-Part6-DairySalesAndBatchInformationCockpit.www.softbasic.net.sim
- 007. DDS_Cfg_01_Config_Admin.www.softbasic.net.sim
- 008. DDS_Cfg_02_Config_Admin.www.softbasic.net.sim
- 009. DDS_Cfg_03_Config_Admin.www.softbasic.net.sim
- 010. DDS_Cfg_04_ConditionEditor.www.softbasic.net.sim
- 011. DDS_Inquiry_01_GetDistance.www.softbasic.net.sim
- 012. DDS_LocalRepos_01_Maint.www.softbasic.net.sim
- 013. DDS_Location_01_Maint.www.softbasic.net.sim
- 014. DDS-ConfigurationAndAdministrationPartI.www.softbasic.net.sim
- 015. DDS-ConfigurationAndAdministrationPartII.www.softbasic.net.sim
- 016. DDS-ConfigurationAndAdministrationPartIII.www.softbasic.net.sim
- 017. DDS-Configuration-UsingConditionEditor.www.softbasic.net.sim
- 018. DDS-Inquiry-GetDistanceFromProvider.www.softbasic.net.sim
- 019. DDS-LocalRepositoryProcessing.www.softbasic.net.sim
- 020. DDS-LocationProcessing.www.softbasic.net.sim
- 021. DefineaDatabaseTableinJavaDictionary.www.softbasic.net.sim
- 022. DefineBusinessBlueprint.www.softbasic.net.sim
- 023. DesignProcessfromScratch.www.softbasic.net.sim
- 024. DesignRegistration.www.softbasic.net.sim
- 025. DirectStoreDelivery(DSD)-Part1-CreatingOrdersAndDeliveries.www.softbasic.net.sim

026. DistributorResellerManagement-PriceProtectionPart1.www.softbasic.net.sim
027. DistributorResellerManagement-PriceProtectionPart2.www.softbasic.net.sim
028. DistributorResellerManagement-S&DPart1.www.softbasic.net.sim
029. DistributorResellerManagement-S&DPart2.www.softbasic.net.sim
030. DistributorResellerManagement-S&DPart3.www.softbasic.net.sim
031. DistributorResellerManagement-S&DPart4.www.softbasic.net.sim
032. DistributorResellerManagement-SellInAtDistributor.www.softbasic.net.sim
033. DistributorResellerManagement-SellInAtManufacturer.www.softbasic.net.sim
034. DistributorResellerManagement-SellInThroughAtDistributor.www.softbasic.net.sim
035. DocFindCust_earmarked.www.softbasic.net.sim
036. DSD-Part2-VisitControlAndDynamicTransportationPlanning.www.softbasic.net.sim
037. DSD-Part3-OutputControl.www.softbasic.net.sim
038. Duet-ClientInstallation.www.softbasic.net.sim
039. Duet-Installer-SettingUpTheDuetEnvironment.www.softbasic.net.sim
040. Duet-RoleManagement.www.softbasic.net.sim
041. Duet-ServiceMap.www.softbasic.net.sim
042. DuetSystemManagement.www.softbasic.net.sim
043. Duet-SystemManagement.www.softbasic.net.sim

Volume name is SAP Simulator

Directory of K:\Room - ERP Learning\SAP Simulator\SAP Simulator - Original\E EXTRACTED\
=====

001. eCATT(CreateNeweCATT).www.softbasic.net.sim
002. ecattcreatenewecatt.sim
003. EDI-ThirdPartyProcurementSubcontractingAndExternalProcessingPart1.sim
004. EDI-ThirdPartyProcurementSubcontractingAndExternalProcessingPart1.www.softbasic.net.sim
005. EDI-ThirdPartyProcurementSubcontractingAndExternalProcessingPart2.sim
006. EDI-ThirdPartyProcurementSubcontractingAndExternalProcessingPart3.sim
007. EDI-ThirdPartyProcurementSubcontractingAndExternalProcessingPart4.sim
008. EDI-ThirdPartyProcurementSubcontractingAndExternalProcessingPart5.sim
009. EDI-ThirdPartyProcurementSubcontractingAndExternalProcessingPart6.sim
010. EDI-ThirdPartyProcurementSubcontractingAndExternalProcessingPart6.www.softbasic.net.sim
011. EDI-ThirdPartyProcurementSubcontractingAndExternalProcessingPart7.sim
012. EDI-ThirdPartyProcurementSubcontractingAndExternalProcessingPart8.sim
013. EDI-ThirdPartyProcurementSubcontractingAndExternalProcessingPart8.www.softbasic.net.sim
014. EH&S-IndustrialHygieneAndSafety(IncidentAccidentManagement).www.softbasic.net.sim
015. EH&S-IndustrialHygieneAndSafety(WorkArea).www.softbasic.net.sim

- 016. EH&S-OccupationalHealth(HealthSurveillanceProtocol).www.softbasic.net.sim
- 017. EH&S-OccupationalHealth(MedicalServiceI).www.softbasic.net.sim
- 018. EH&S-OccupationalHealth(MedicalServiceII).www.softbasic.net.sim
- 019. EH&S-OccupationalHealth(PersonalSelection).www.softbasic.net.sim
- 020. EH&S-PhraseManagement-Phrase.www.softbasic.net.sim
- 021. EH&S-SpecificationManagement-Inheritance.www.softbasic.net.sim
- 022. EH&S-StandardOperatingProcedures.www.softbasic.net.sim
- 023. EH&S-WasteManagement(PrintingOfDisposalDocuments).www.softbasic.net.sim
- 024. EH&S-WasteManagement.www.softbasic.net.sim
- 025. e-LearningManagementWithTheSAPSolutionManager.www.softbasic.net.sim
- 026. Enabling SSL Support on the WAS 2.www.softbasic.net.sim
- 027. Enabling SSL Support on the WAS 3.www.softbasic.net.sim
- 028. Enabling SSL Support on the WAS 4.www.softbasic.net.sim
- 029. EnablingSSLSupportOnTheSAPWebAS6.20(Part1of6).www.softbasic.net.sim
- 030. EnablingSSLSupportOnTheSAPWebAS6.20-Exercise_4-ConfiguringTheUseOfSSLForUserAuthentication(Part5of6).www.softbasic.net.sim
- 031. EnablingSSLSupportOnTheSAPWebAS6.20-Exercise2-CreatingTheSSLServerPSE(Part3of6).www.softbasic.net.sim
- 032. EnablingSSLSupportOnTheSAPWebAS6.20-Exercise3-CreatingTheSSLClientPSEs_Part4of6_.www.softbasic.net.sim
- 033. EnablingSSLSupportOnTheSAPWebAS6.20-Exercise5-TestingTheConnections(Part6of6).www.softbasic.net.sim
- 034. Engineer-To-Order Quotation With BOM PS Interface.sim
- 035. Engineer-To-Order Quotation With BOM PS Interface.www.softbasic.net.sim
- 036. Engineer-To-Order With Pro Man Part 1.sim
- 037. Engineer-To-Order With Pro Man Part 1.www.softbasic.net.sim
- 038. Engineer-To-Order With Pro Man Part 2.sim
- 039. Engineer-To-Order With Pro Man Part 2.www.softbasic.net.sim
- 040. EP-UserManagement.www.softbasic.net.sim
- 041. ERP2004KeyGeneration.www.softbasic.net.sim
- 042. ERPFinance.www.softbasic.net.sim
- 043. ERPHCM.www.softbasic.net.sim
- 044. ETO-WithProMan.www.softbasic.net.sim

Volume name is SAP Simulator

Directory of K:\Room - ERP Learning\SAP Simulator\SAP Simulator - Original\F EXTRACTED\
=====

- 001. FabricatedMetals-BoughtInMaterialMTO.www.softbasic.net.sim
- 002. FabricatedMetals-ForecastOfSemiFinishedGoods.www.softbasic.net.sim
- 003. FabricatedMetals-InterCompanyStockTransfer.www.softbasic.net.sim
- 004. FabricatedMetals-SalesFromStockJobProcessingWithManufacturingOrder.www.softbasic.net.sim

005. FabricatedMetals-SalesFromStockWithSimpleJobProcessing.www.softbasic.net.sim
006. FabricatedMetals-ThirdPartyProcurementWithShippingNotification.www.softbasic.net.sim
007. FabricatedMetals-TollProcessingSubcontracting.www.softbasic.net.sim
008. FCX_CFI_Cfg_01_Relevance.www.softbasic.net.sim
009. FCX_CFI_Cfg_02_CondTabType.www.softbasic.net.sim
010. FCX_CFI_Cfg_05_CFI_Records.www.softbasic.net.sim
011. FCX_CFI_Inq_01_SalesOrd.www.softbasic.net.sim
012. FCX_CFI_Process_01_Create.www.softbasic.net.sim
013. FCX_CFI_Process_04_MChg.www.softbasic.net.sim
014. FCX_ICB_01_Configuration.www.softbasic.net.sim
015. FCX-CFI-Part1-MassCreateCustomerFreightDocuments.www.softbasic.net.sim
016. FCX-CFI-Part2-MassCreateCustomerFreightDocuments.www.softbasic.net.sim
017. FCX-CFI-Part4-MassCreateCustomerFreightDocuments.www.softbasic.net.sim
018. FCX-CFI-Part5-ViewsLogsForCustomerFreightProcess.www.softbasic.net.sim
019. FCX-Configuration-Part1-CreateAndMaintainCustomerFreightRelevance.www.softbasic.net.sim
020. FCX-Configuration-Part2-CreateAndMaintainConditionTablesAndTypes.www.softbasic.net.sim
021. FCX-Configuration-Part3-CreateAndMaintainQuantityRanges.www.softbasic.net.sim
022. FCX-Configuration-Part5-CreateAndMaintainCustomerFreightRecords.www.softbasic.net.sim
023. FCX-HowToExecuteCustomerFreightInformationFromAnOrder.www.softbasic.net.sim
024. FCX-ICB-Part1-Inter-CompanyBillingConfiguration.www.softbasic.net.sim
025. FCX-ICB-Part3-MassCreateSettlementShipmentCostDocuments.www.softbasic.net.sim
026. FI-AA-EnhancedAccountAssignment.sim
027. FI-AA-EnhancedAccountAssignment.www.softbasic.net.sim
028. FI-AA-Integration-AssetAccounting.sim
029. FI-AA-PostingDepreciationtoWBSElement.sim
030. FI-AA-PostingDepreciationtoWBSElement.www.softbasic.net.sim
031. FI-AP-AccountsPayable.sim
032. FI-AP-CreditMemoProcessing.sim
033. FI-AP-InvoiceWithClearing.sim
034. FI-AP-InvoiceWithClearingviaManualAccountStatement.sim
035. FI-AP-PostingInvoices.sim
036. FI-AP-PostingInvoices.www.softbasic.net.sim
037. FI-AR-CreditManagementt.sim
038. FI-AR-CreditManagementt.www.softbasic.net.sim
039. FI-AR-CreditMemo.sim
040. FI-AR-CreditMemo.www.softbasic.net.sim
041. FI-AR-DownPaymentRequest&Posting&Clearing.sim
042. FI-AR-DownPaymentRequest&Posting&Clearing.www.softbasic.net.sim

043. FI-AR-Dunning.sim
044. FI-AR-Dunning.www.softbasic.net.sim
045. FI-AR-ERP2004CreditManagement.www.softbasic.net.sim
046. FI-BL-PostprocessingofBankStatement.www.softbasic.net.sim
047. FI-CO-DirectCapitalization.sim
048. FI-CO-DirectCapitalization.www.softbasic.net.sim
049. FI-CO-EasyCostPlanningandDocumentRelationshipBrowser.sim
050. FI-CO-EasyCostPlanningandDocumentRelationshipBrowser.www.softbasic.net.sim
051. FI-CO-EasyCostPlanningandEditCostingModel.sim
052. FI-CO-EasyCostPlanningandEditCostingModel.www.softbasic.net.sim
053. FI-CO-InternalServiceRequest.sim
054. FI-CO-MeasurementsAsStatisticalKeyFigures.www.softbasic.net.sim
055. FI-CO-OIM-MultipleCurrenciesinPlanningandBudgeting.www.softbasic.net.sim
056. FI-CO-PC-FlexibleSelectionList.www.softbasic.net.sim
057. FI-CO-ScheduleManager.www.softbasic.net.sim
058. FI-CO-WebserviceSurvey.www.softbasic.net.sim
059. FI-GL-AllocationsToGeneralLedger.www.softbasic.net.sim
060. FI-GL-ClosingOperationsPart1.www.softbasic.net.sim
061. FI-GL-ClosingOperationsPart2.www.softbasic.net.sim
062. FI-GL-ControllingAndFinancialIntegration.www.softbasic.net.sim
063. FI-GL-CustomizingAccrualEngine.www.softbasic.net.sim
064. FI-GL-CustomizingManualAccruals.www.softbasic.net.sim
065. FI-GL-CustomizingProvisionsforAwards.www.softbasic.net.sim
066. FI-GL-DrilldownReporting.www.softbasic.net.sim
067. FI-GL-FinancialPlanning.www.softbasic.net.sim
068. FI-GL-ManualAccruals.www.softbasic.net.sim
069. FI-GL-NewReportingRFBILA00.www.softbasic.net.sim
070. FI-GL-ProvisionsforAwards.www.softbasic.net.sim
071. FI-GL-RecordTheLiabilityToTheVendor.www.softbasic.net.sim
072. FI-RollingForecast.www.softbasic.net.sim
073. FI-SimulationOfResourcesWithSAPSemBusinessPlanning.www.softbasic.net.sim
074. FoodSafety-Part1-Preparation.sim
075. FoodSafety-Part1-Preparation.www.softbasic.net.sim
076. FoodSafety-Part2-ProcessManufacturing.sim
077. FoodSafety-Part2-ProcessManufacturing.www.softbasic.net.sim
078. FoodSafety-Part3-SalesAndDelivery.sim
079. FoodSafety-Part3-SalesAndDelivery.www.softbasic.net.sim
080. FromOpportunityToSalesOrder.www.softbasic.net.sim

Volume name is SAP Simulator

Directory of K:\Room - ERP Learning\SAP Simulator\SAP Simulator - Original\G EXTRACTED\
=====

- 001. GDS-Overview.www.softbasic.net.sim
- 002. General-CalculatorExample.www.softbasic.net.sim
- 003. General-IntroductiontoSAPiTutor2.0.www.softbasic.net.sim
- 004. General-MicrosoftNetMeeting.www.softbasic.net.sim
- 005. General-SAPTutorTools.www.softbasic.net.sim

Volume name is SAP Simulator

Directory of K:\Room - ERP Learning\SAP Simulator\SAP Simulator - Original\H EXTRACTED\
=====

- 001. HandoverProjectsintoOperationsMode.www.softbasic.net.sim
- 002. Healthcare-FlexibleReportingWithSAPBusinessInformationWarehouse.www.softbasic.net.sim
- 003. Healthcare-IntegratedHospitalProcessesPart1.www.softbasic.net.sim
- 004. Healthcare-IntegratedHospitalProcessesPart2.www.softbasic.net.sim
- 005. Healthcare-IntegratedInpatientAndOutpatientAppointmentPlanning.www.softbasic.net.sim
- 006. Healthcare-LocalEBPScenario.www.softbasic.net.sim
- 007. Healthcare-MobileConsultation.www.softbasic.net.sim
- 008. Healthcare-mySAPCRMContactCenter.www.softbasic.net.sim
- 009. Healthcare-mySAPCRMNewsletterCampaign.www.softbasic.net.sim
- 010. Healthcare-mySAPCRMPacemakerPatientFollowUpVisits.www.softbasic.net.sim
- 011. Healthcare-OutpatientClinicWorkStation.www.softbasic.net.sim
- 012. Healthcare-RequestNonStockMaterial(ClassicScenario).www.softbasic.net.sim
- 013. Healthcare-RequestStockMaterial(ClassicScenario).www.softbasic.net.sim
- 014. How to Change BC Sets.www.softbasic.net.sim
- 015. How to Interpret the Activation Log.www.softbasic.net.sim
- 016. How to Print BC Sets.www.softbasic.net.sim
- 017. How to Set Up Attributes.www.softbasic.net.sim
- 018. How to Set Up System Settings.www.softbasic.net.sim
- 019. How to Set Up User Settings.www.softbasic.net.sim
- 020. How to Use the BC Set Info System.www.softbasic.net.sim
- 021. How to Use the IMG Check Report.www.softbasic.net.sim
- 022. HowToActivateBCSets.www.softbasic.net.sim
- 023. HowToChangeBCSets.www.softbasic.net.sim

- 024. HowToCreateABCSet.www.softbasic.net.sim
- 025. HowToCreateAComponentView.www.softbasic.net.sim
- 026. HowToCreateBCSetsInTheSolutionManager.www.softbasic.net.sim
- 027. HowToInterpretTheActivationLog.www.softbasic.net.sim
- 028. HowToPrintBCSets.www.softbasic.net.sim
- 029. HowToSetUpAttributes.www.softbasic.net.sim
- 030. HowToSetUpSystemSettings.www.softbasic.net.sim
- 031. HowToSetUpUserSettings.www.softbasic.net.sim
- 032. HR-BalancedScorecard.www.softbasic.net.sim
- 033. HR-Benefits-DomesticPartnerHandlingAsOfR3Enterprise.www.softbasic.net.sim
- 034. HR-Benefits-EnrollmentEmployeeSelfServiceInSAPEP5.0.www.softbasic.net.sim
- 035. HR-BudgetingECM.www.softbasic.net.sim
- 036. HR-ChangeEmployeeFormOfAddress.www.softbasic.net.sim
- 037. HR-CreatingAAdHocQuery.www.softbasic.net.sim
- 038. HR-EmployeeTurnoverManagement.www.softbasic.net.sim
- 039. HR-FormofAddress.www.softbasic.net.sim
- 040. HR-HumanResourcesExecutive.www.softbasic.net.sim
- 041. HR-JobPricingECM.www.softbasic.net.sim
- 042. HR-MSSCompensationPlanningECM.www.softbasic.net.sim
- 043. HR-ObjectiveSettingAndAppraisals.www.softbasic.net.sim
- 044. HR-OrganizationStructure.www.softbasic.net.sim
- 045. HR-TimeManagement-ManagementOfFamilyAndMedicalLeave.www.softbasic.net.sim
- 046. HR-TimeManagement-MessageProcessingInTheTimeManagersWorkplace.www.softbasic.net.sim
- 047. HR-TimeManagement-TimeManagersWorkplace.www.softbasic.net.sim
- 048. HR-TravelManagementDemonstration.www.softbasic.net.sim
- 049. HR-WebCockpitDeptManager.www.softbasic.net.sim
- 050. HR-WebcockpitHumanResourceAnalyst(WithNavig).www.softbasic.net.sim
- 051. HR-WebCockpitwithSelection.www.softbasic.net.sim

Volume name is SAP Simulator

Directory of K:\Room - ERP Learning\SAP Simulator\SAP Simulator - Original\I EXTRACTED\
=====

- 001. i18n-Settings.sim
- 002. i18n-Settings.www.softbasic.net.sim
- 003. IMC-Service-On-SiteServicePart1.www.softbasic.net.sim
- 004. IM-FA-AppropriationRequests.www.softbasic.net.sim
- 005. Importing_SupportPackages-DowntimeMinimized.www.softbasic.net.sim

- 006. InboundTelesales.www.softbasic.net.sim
- 007. InboundTelesales-InteractionCenter.www.softbasic.net.sim
- 008. Installer.www.softbasic.net.sim
- 009. Installing Registering and Operating CCMS Agents.www.softbasic.net.sim
- 010. Installing_SAP_Solution_Manager.sim
- 011. Installing_SAP_Solution_Manager.www.softbasic.net.sim
- 012. InteractionCenterWebClientKnowledgeSearch.www.softbasic.net.sim
- 013. IssueTrackingExpertiseonDemand-Overview.www.softbasic.net.sim
- 014. ItemHandler.www.softbasic.net.sim

Volume name is SAP Simulator

Directory of K:\Room - ERP Learning\SAP Simulator\SAP Simulator - Original\K EXTRACTED\
=====

- 001. Key Storage Service.sim
- 002. Key Storage Service1.www.softbasic.net.sim
- 003. KeyStorageService.www.softbasic.net.sim
- 004. KM-KnowledgeWorkbench.www.softbasic.net.sim
- 005. KW6_Tutorial.www.softbasic.net.sim

Volume name is SAP Simulator

Directory of K:\Room - ERP Learning\SAP Simulator\SAP Simulator - Original\L EXTRACTED\
=====

- 001. LeadManagement.www.softbasic.net.sim
- 002. LoadBuilding-Part1-RequirementsPlanningPerVendor.www.softbasic.net.sim
- 003. LoadBuilding-Part2-Automatic-ManualLoadBuildRun.www.softbasic.net.sim
- 004. LoadBuilding-Part3-BackorderProcessing.www.softbasic.net.sim

Volume name is SAP Simulator

Directory of K:\Room - ERP Learning\SAP Simulator\SAP Simulator - Original\M EXTRACTED\
=====

- 001. MaintainSystemLandscapesAndNewLogicalComponents.www.softbasic.net.sim
- 002. Make-To-OrderWithVariantConfiguration.www.softbasic.net.sim
- 003. Make-To-Stock With Production Versions And Kanban.sim
- 004. Make-To-Stock With Production Versions And Kanban.www.softbasic.net.sim
- 005. Make-To-StockWithProductionVersionsAndKanban.www.softbasic.net.sim

006. MBS-MoreMobileSolutionsandSuccessStories.www.softbasic.net.sim
007. MBS-SellingMobileSolutions.www.softbasic.net.sim
008. MBS-StrategyGoalsandPortfolioOverview.www.softbasic.net.sim
009. MBS-Top4MobileSolutions.www.softbasic.net.sim
010. MDM_Demo_GP_060317.www.softbasic.net.sim
011. MDM-BasicsofSAPNetWeaverMDMDataManager.www.softbasic.net.sim
012. MDM-DataUnification-CreateANewVendorCentrally.www.softbasic.net.sim
013. Merchandise Distribution-Distribution Planning (Push).sim
014. Merchandise Distribution-Distribution Planning (Push).www.softbasic.net.sim
015. MerchandiseDistribution-DistributionPlanning(Push).www.softbasic.net.sim
016. MerchandiseDistribution-DistributionProcessing.www.softbasic.net.sim
017. MetadataProcessingFramework(MPF).www.softbasic.net.sim
018. MM-CreateEmptiesMaterialC60100.www.softbasic.net.sim
019. MM-CreateFinishedMaterialC10010.www.softbasic.net.sim
020. MM-CreateNon-StockMaterialC90900.www.softbasic.net.sim
021. MM-CreatePackingMaterialC50010.www.softbasic.net.sim
022. MM-CreatePipelineMaterialC45000.www.softbasic.net.sim
023. MM-CreateSemifinishedMaterialB1111.www.softbasic.net.sim
024. MM-ProcurementContract.www.softbasic.net.sim
025. MM-ProcurementOfStockMaterial.www.softbasic.net.sim
026. MM-RepetitiveManufacturing.www.softbasic.net.sim
027. MM-SemiconductorMaterialStagingPart2.www.softbasic.net.sim
028. MM-SemiconductorMaterialStagingPart3.www.softbasic.net.sim
029. MM-SemiconductorMaterialStagingPart4.www.softbasic.net.sim
030. MM-SemiconductorMaterialStagingPart5.www.softbasic.net.sim
031. MobileServiceOrderConfirmation.www.softbasic.net.sim
032. Modile-MobileTravelDemonstration.www.softbasic.net.sim
033. MSS-Financials.www.softbasic.net.sim
034. MSS-HumanResources1.www.softbasic.net.sim
035. MSS-HumanResources2.www.softbasic.net.sim
036. MSS-ManagerSelfServiceFinancials.www.softbasic.net.sim
037. MSS-ManagerSelfServiceHR01.www.softbasic.net.sim
038. MSS-ManagerSelfServiceHR02.www.softbasic.net.sim
039. MSS-PerformanceManagement.www.softbasic.net.sim
040. MW04-BusinessServices-TriggeringALMAAlertsWithEventLinkage6.40.www.softbasic.net.sim
041. mySAP CRM Solution Overview.sim
042. mySAP CRM Solution Overview.www.softbasic.net.sim
043. mySAPCRMSolutionOverview.www.softbasic.net.sim

- 044. mySAPERP-UsingtheUpgradeRoadmap.www.softbasic.net.sim
- 045. mySAPPLMBusinessProcesses.www.softbasic.net.sim
- 046. mySAPSCM2005BusinessProcesses(ST-ICO150_700Patch0001).www.softbasic.net.sim
- 047. mySAPSCM-UsingImplementationContent(ST-ICO150_700Patch0002).www.softbasic.net.sim
- 048. mySAPSCM-UsingtheUpgradeRoadmap.www.softbasic.net.sim

Volume name is SAP Simulator

Directory of K:\Room - ERP Learning\SAP Simulator\SAP Simulator - Original\N EXTRACTED\
=====

- 001. NewNoteAssistant.www.softbasic.net.sim
- 002. NW04-BuildingWebServicesWithJavaPart2.sim
- 003. NW04-BuildingWebServicesWithJavaPart3.sim
- 004. NW04-BuildingWebServicesWithJavaPart3.www.softbasic.net.sim
- 005. NW04-BuildingWebServicesWithJavaPart4.sim
- 006. NW04-BuildingWebServicesWithJavaPart4.www.softbasic.net.sim
- 007. NW04-BusinessCommunication-TelephonyIntegration.sim
- 008. NW04-BusinessCommunication-TelephonyIntegration.www.softbasic.net.sim
- 009. NW04-BusinessServices-IntroductionToSAPAlertManagement(ALM)6.40.www.softbasic.net.sim
- 010. NW04-BusinessServices-IntroductionToSAPAlertManagement_ALM_6.40.sim
- 011. NW04-BusinessServices-IntroductionToSAPAlertManagement_ALM_6.40.www.softbasic.net.sim
- 012. NW04-CreatingADynamicFormForPrintingUsingTheAdobeDesignerFormLayoutTool(1).sim
- 013. NW04-CreatingADynamicFormForPrintingUsingTheAdobeDesignerFormLayoutTool(1).www.softbasic.net.sim
- 014. NW04-CreatingADynamicFormForPrintingUsingTheAdobeDesignerFormLayoutTool.sim
- 015. NW04-CreatingADynamicFormForPrintingUsingTheAdobeDesignerFormLayoutTool.www.softbasic.net.sim
- 016. NW04-CreatingAnInteractiveFormUsingTheAdobeDesignerFormLayoutTool.www.softbasic.net.sim
- 017. NW04-DatabaseIndexesAndTableBufferInTheJavaDictionary.sim
- 018. NW04-DatabaseIndexesAndTableBufferInTheJavaDictionary.www.softbasic.net.sim
- 019. NW04-EnablingSSLSupportOnTheSAPWebAS6.20.sim
- 020. NW04-EnablingSSLSupportOnTheSAPWebAS6.20.www.softbasic.net.sim
- 021. NW04-EnablingSSLSupportOnTheSAPWebAS6.20ConfiguringTheUseOfSSLForUserAuthentication.sim
- 022. NW04-EnablingSSLSupportOnTheSAPWebAS6.20ConfiguringTheUseOfSSLForUserAuthentication.www.softbasic.net.sim
- 023. NW04-EnablingSSLSupportOnTheSAPWebAS6.20-Exercise1-DownloadingAndInstallingTheSAPCryptographicLibrary.www.softbasic.net.sim
- 024. NW04-EnablingSSLSupportOnTheSAPWebAS6.20-Exercise2-CreatingTheSSLServerPSE.sim
- 025. NW04-EnablingSSLSupportOnTheSAPWebAS6.20-Exercise2-CreatingTheSSLServerPSE.www.softbasic.net.sim
- 026. NW04-EnablingSSLSupportOnTheSAPWebAS6.20-Exercise3-CreatingTheSSLClientPSEs.sim
- 027. NW04-EnablingSSLSupportOnTheSAPWebAS6.20-Exercise3-CreatingTheSSLClientPSEs.www.softbasic.net.sim
- 028. NW04-EnablingSSLSupportOnTheSAPWebAS6.20-Exercise5-TestingTheConnections.sim

029. NW04-EnablingSSLSupportOnTheSAPWebAS6.20-Exercise5-TestingTheConnections.www.softbasic.net.sim
030. NW04-JavaApplicationsLinkJDBCDataSources.sim
031. NW04-JavaApplicationsLinkJDBCDataSources.www.softbasic.net.sim
032. NW04-ModifyADatabaseTableInTheJavaDictionary.sim
033. NW04-ModifyADatabaseTableInTheJavaDictionary.www.softbasic.net.sim
034. NW04-OvervieweBusinessSecurity-IdentifyingUsers.sim
035. NW04-OvervieweBusinessSecurity-IdentifyingUsers.www.softbasic.net.sim
036. NW04-OverviewOfeBusinessSecurity-AuthorizationsAndNetworkSecurity.sim
037. NW04-OverviewOfeBusinessSecurity-AuthorizationsAndNetworkSecurity.www.softbasic.net.sim
038. NW04-OverviewOfeBusinessSecurity-EstablishingObligationAndNon-RepudiationPlusAuditingAndLogging.sim
039. NW04-OverviewOfeBusinessSecurity-EstablishingObligationAndNon-RepudiationPlusAuditingAndLogging.www.softbasic.net.sim
040. NW04-OverviewOfeBusinessSecurity-EstablishingTrustRelationships.sim
041. NW04-OverviewOfeBusinessSecurity-EstablishingTrustRelationships.www.softbasic.net.sim
042. NW04-OverviewOfeBusinessSecurity-IntroductionToBasicSecurityConcepts.sim
043. NW04-OverviewOfeBusinessSecurity-IntroductionToBasicSecurityConcepts.www.softbasic.net.sim
044. NW04-PortableDataTypesInTheJavaDictionary.sim
045. NW04-SAP.NetConnector.sim
046. NW04-SAP.NetConnector.www.softbasic.net.sim
047. NW04-SAPWebApplicationServer-J2EESecurity(1).sim
048. NW04-SAPWebApplicationServer-J2EESecurity(1).www.softbasic.net.sim
049. NW04-SAPWebApplicationServer-J2EESecurity.sim
050. NW04-SAPWebApplicationServer-J2EESecurity.www.softbasic.net.sim
051. NW04-SecurityProviderService.sim
052. NW04-SharedObjectsBasicsForSAPNetweaverWebAS6.40.sim
053. NW04-SharedObjectsBasicsForSAPNetweaverWebAS6.40.www.softbasic.net.sim
054. NW04-SingleSign-OnToSAPEnterprisePortalUsingSAPPassports.sim
055. NW04-SingleSign-OnToSAPEnterprisePortalUsingSAPPassports.www.softbasic.net.sim
056. NW04-SQLInTheSpotlight.sim
057. NW04-SQLInTheSpotlight.www.softbasic.net.sim
058. NW04-UserManagementintheEnterprisePortalUserInterface.sim
059. NW04-UserManagementintheEnterprisePortalUserInterface.www.softbasic.net.sim
060. NW04-UserManagementintheSAPWebAS6.40UMEUserInterface.sim
061. NW04-UserManagementintheSAPWebAS6.40UMEUserInterface.www.softbasic.net.sim
062. NW04-XI3.0-BPMClick-Through1.sim
063. NW04-XI3.0-BPMClick-Through1.www.softbasic.net.sim
064. NW04-XI3.0-BPMClick-Through2.sim
065. NW04-XI3.0-BPMClick-Through2.www.softbasic.net.sim
066. NWDS-DefineADatabaseTable.sim

- 067. NWGP-HowtoCreateaGuidedProcedureforEmployeeLeaveRequests.sim
- 068. NWGP-HowtoCreateaGuidedProcedureforEmployeeLeaveRequests.www.softbasic.net.sim
- 069. NWGP-HowToUseExceptionsinGP.sim
- 070. NWGP-HowToUseExceptionsinGP.www.softbasic.net.sim
- 071. NWGP-OverviewEndUserDesigntime.sim
- 072. NWGP-OverviewEndUserDesigntime.www.softbasic.net.sim
- 073. NW-HowToCreateaContentPackageObject.sim
- 074. NW-HowToCreateaContentPackageObject.www.softbasic.net.sim
- 075. NW-HowtoCreateaProcessforSearchingSAPWebPagesusingGuidedProcedures.sim
- 076. NW-HowtoCreateaProcessforSearchingSAPWebPagesusingGuidedProcedures.www.softbasic.net.sim
- 077. NW-POCreateusingDS.sim
- 078. NW-POCreateusingDS.www.softbasic.net.sim

Volume name is SAP Simulator

Directory of K:\Room - ERP Learning\SAP Simulator\SAP Simulator - Original\O EXTRACTED\
=====

- 001. OpportunityManagementInMobileSales.www.softbasic.net.sim
- 002. Order To Cash Processing.sim
- 003. Order To Cash Processing.www.softbasic.net.sim
- 004. OrderProcessingInCollaborativeShowrooms.www.softbasic.net.sim
- 005. Overview of E-Business Security 1.www.softbasic.net.sim
- 006. Overview of E-Business Security 5 - 6.www.softbasic.net.sim
- 007. Overview Of SAP Best Practices For IM And C.sim
- 008. Overview of SAP Best Practices For Professional Services.sim
- 009. Overview of SAP Best Practices For Professional Services.www.softbasic.net.sim
- 010. Overview of SAP Best Practices For Wholesale Distribution.sim
- 011. Overview of SAP Best Practices For Wholesale Distribution.www.softbasic.net.sim
- 012. OverviewOfE-BusinessSecurity-AuthorizationsAndNetworkSecurity.www.softbasic.net.sim
- 013. OverviewOfE-BusinessSecurity-EstablishingTrustRelationships.www.softbasic.net.sim
- 014. OverviewOfE-BusinessSecurity-IdentifyingUsers.www.softbasic.net.sim
- 015. OverviewOfE-BusinessSecurity-IntroductionToBasicSecurityConcepts.www.softbasic.net.sim
- 016. OverviewOfE-BusinessSecurityPart5-EstablishingObligationAndNon-RepudiationPlusAuditingAndLogging.www.softbasic.net.sim

Volume name is SAP Simulator

Directory of K:\Room - ERP Learning\SAP Simulator\SAP Simulator - Original\P EXTRACTED\
=====

001. Pharmacueticals-InternalSubcontractingPart1.www.softbasic.net.sim
002. Pharmacueticals-InternalSubcontractingPart2.www.softbasic.net.sim
003. Pharmacueticals-LiquidDosageFormsPart1.www.softbasic.net.sim
004. Pharmacueticals-LiquidDosageFormsPart2.www.softbasic.net.sim
005. Pharmacueticals-LiquidDosageFormsPart3.www.softbasic.net.sim
006. Pharmacueticals-LiquidDosageFormsPart4.www.softbasic.net.sim
007. Pharmacueticals-LiquidDosageFormsPart5.www.softbasic.net.sim
008. Pharmacueticals-LiquidDosageFormsPart6.www.softbasic.net.sim
009. Pharmacueticals-LiquidDosageFormsPart7.www.softbasic.net.sim
010. Pharmacueticals-LiquidDosageFormsPart8.www.softbasic.net.sim
011. Pharmacueticals-LiquidDosageFormsPart9.www.softbasic.net.sim
012. Pharmacueticals-PlantMaintenanceAndCalibrationPart1.www.softbasic.net.sim
013. Pharmacueticals-PlantMaintenanceAndCalibrationPart2.www.softbasic.net.sim
014. Pharmacueticals-PlantMaintenanceAndCalibrationPart3.www.softbasic.net.sim
015. Pharmacueticals-ProjectMangementInResearchAndDevelopment.www.softbasic.net.sim
016. Pharmacueticals-SoildDosageFormsPart1.www.softbasic.net.sim
017. Pharmacueticals-SoildDosageFormsPart2.www.softbasic.net.sim
018. Pharmacueticals-SoildDosageFormsPart3.www.softbasic.net.sim
019. Pharmacueticals-SoildDosageFormsPart4.www.softbasic.net.sim
020. Pharmacueticals-SoildDosageFormsPart5.www.softbasic.net.sim
021. Pharmacueticals-SoildDosageFormsPart6.www.softbasic.net.sim
022. Pharmacueticals-SoildDosageFormsPart7.www.softbasic.net.sim
023. Pharmacueticals-SoildDosageFormsPart8.www.softbasic.net.sim
024. Pharmacueticals-SoildDosageFormsPart9.www.softbasic.net.sim
025. Pharmacueticals-StabilityStudy.www.softbasic.net.sim
026. Pharmacueticals-ThirdPartyProcessing.www.softbasic.net.sim
027. PLM-AssetLifeCycleManagementandBusinessWarehouse.www.softbasic.net.sim
028. PLM-AuditManagement6(Evaluation).www.softbasic.net.sim
029. PLM-BWInspectionLotsWithException.www.softbasic.net.sim
030. PLM-BWVendorAnalysisQuery.www.softbasic.net.sim
031. PLM-CommercialProjectOverview.www.softbasic.net.sim
032. PLM-LifeCycleProfitabilityAnalysis.www.softbasic.net.sim
033. PLM-ProductDesignandEngineeringPart1.www.softbasic.net.sim
034. PLM-ProductDesignandEngineeringPart2.www.softbasic.net.sim
035. PLM-ProductDesignandEngineeringPart3.www.softbasic.net.sim
036. PLM-ProductDesignandEngineeringPart4.www.softbasic.net.sim
037. PLM-ProjectProgressReport.www.softbasic.net.sim
038. PLM-QM-CertificatesViaWWW.www.softbasic.net.sim

039. PLM-QM-LIMS-PlannedInspections-GoodsReceiptInspection.www.softbasic.net.sim
040. PLM-QM-LIMS-PlannedInspections-IntegratedProblemHandling.www.softbasic.net.sim
041. PLM-QM-LIMS-UnplannedInspectionsPart1.www.softbasic.net.sim
042. PLM-QM-LIMS-UnplannedInspectionsPart2.www.softbasic.net.sim
043. PLM-QM-LIMS-UnplannedInspectionsPart3.www.softbasic.net.sim
044. PLM-QM-LIMS-UnplannedInspectionsPart4.www.softbasic.net.sim
045. PLM-QM-LIMS-UnplannedSamples(CompetitorSample).www.softbasic.net.sim
046. PLM-QM-LIMS-UnplannedSamples(WaterAnalysis).www.softbasic.net.sim
047. PLM-QM-MobileResultsRecording.www.softbasic.net.sim
048. PLM-QualityImprovementInternalProblemNotification.www.softbasic.net.sim
049. PLM-QualityImprovementInternetServiceRequest.www.softbasic.net.sim
050. PLM-QualityImprovementProblemAndComplaintActionBox.www.softbasic.net.sim
051. PM-IntegrationPlantMaintenance.www.softbasic.net.sim
052. PM-ProcessingNotificationsAndOrders.www.softbasic.net.sim
053. PM-RedLiningTutorial.www.softbasic.net.sim
054. PP-Basics(1)TheProductOverview.www.softbasic.net.sim
055. PP-Basics(2)TheProductView.www.softbasic.net.sim
056. PP-Basics(3)TheProductPlanningTable.www.softbasic.net.sim
057. PP-Basics(4)TheDetailedSchedulingPlanningBoard.www.softbasic.net.sim
058. PreconfiguredSmartForms.www.softbasic.net.sim
059. Procure To Pay-Part-2-Requirement Planning.www.softbasic.net.sim
060. ProcurementOfReplenishableMerchandisePart1.www.softbasic.net.sim
061. ProcurementOfReplenishableMerchandisePart2.www.softbasic.net.sim
062. ProcurementOfReplenishableMerchandisePart3.www.softbasic.net.sim
063. ProcureToPay-Part1-SourcingActivities.www.softbasic.net.sim
064. ProcureToPay-Part2-RequirementPlanning.www.softbasic.net.sim
065. ProcureToPay-Part3-PurchaseOrderProcessing.www.softbasic.net.sim
066. ProcureToPay-Part4-LogisticsExecution.www.softbasic.net.sim
067. ProcureToPay-Part5-Billing.www.softbasic.net.sim
068. Project With Resource Related Intercompany Billing-Part1.sim
069. Project With Resource Related Intercompany Billing-Part1.www.softbasic.net.sim
070. ProjectPreparation.www.softbasic.net.sim
071. ProjectPreparation-BSP.www.softbasic.net.sim
072. ProjectPreparationwiththeWebinterface-Scenarios.www.softbasic.net.sim
073. ProjectResourceAndFinancialManagementWithOrderControlling.www.softbasic.net.sim
074. ProjectWithResourceRelatedIntercompanyBilling-Part1.www.softbasic.net.sim
075. ProjectWithResourceRelatedIntercompanyBilling-Part2.www.softbasic.net.sim.sim
076. Promotion Planning Part1.sim

- 077. Promotion Planning Part1.www.softbasic.net.sim
- 078. Promotion Planning Part2.sim
- 079. Promotion Planning Part2.www.softbasic.net.sim
- 080. PublicSector-BusinessLicense.www.softbasic.net.sim
- 081. PublicSector-ExcavatioRequest.www.softbasic.net.sim

Volume name is SAP Simulator

Directory of K:\Room - ERP Learning\SAP Simulator\SAP Simulator - Original\Q EXTRACTED\
=====

- 001. QM-StabiStudyPhase1.www.softbasic.net.sim
- 002. QM-StabiStudyPhase2.www.softbasic.net.sim
- 003. QM-StabiStudyPhase3.www.softbasic.net.sim
- 004. QM-StabiStudyPhase4.www.softbasic.net.sim
- 005. QM-StabiStudyPhase5.www.softbasic.net.sim
- 006. QuotationAndOrderManagement.www.softbasic.net.sim

Volume name is SAP Simulator

Directory of K:\Room - ERP Learning\SAP Simulator\SAP Simulator - Original\R EXTRACTED\
=====

- 001. R3-ConfiguringtheSendingofE-MailsasanAuto-Reaction.www.softbasic.net.sim
- 002. RBE3.0Analyzer.www.softbasic.net.sim
- 003. RBE3.0Configurator.www.softbasic.net.sim
- 004. RBE3.0Explorer.www.softbasic.net.sim
- 005. RBE3.0Extractor.www.softbasic.net.sim
- 006. RBE3.0Migrate.www.softbasic.net.sim
- 007. RBE3.0UserMaintenance.www.softbasic.net.sim
- 008. RCX_Dtntion_Cfg_20_Special.www.softbasic.net.sim
- 009. RCX_Dtntion_Rpt_1_Compute.www.softbasic.net.sim
- 010. RCX_Dtntion_Rpt_3_Delete.www.softbasic.net.sim
- 011. RCX_Equip_03_StatusQueries.www.softbasic.net.sim
- 012. RCX_Equip_04_Configuration.www.softbasic.net.sim
- 013. RCX_EquipTrk_Reports_01.www.softbasic.net.sim
- 014. RCX_EquipTrk_ShpStat_1_Cur.www.softbasic.net.sim
- 015. RCX_Lease_Reporting_01.www.softbasic.net.sim
- 016. RCX_LeaseMaint_01_Lease.www.softbasic.net.sim
- 017. RCX_MileCredits_Rpting_01.www.softbasic.net.sim

018. RCX_R3_Routes_01.www.softbasic.net.sim
019. RCX_R3_Routes_03.www.softbasic.net.sim
020. RCX-DeleteDetentionRecordsReport-ExecuteTheDeleteDetentionRecordsReport.www.softbasic.net.sim
021. RCX-DetentionComputationReport-ExecuteTheDetentionComputationReport.www.softbasic.net.sim
022. RCX-DetentionSpecialConfiguration-MaintainDetentionSpecialProcessingIndicatorsAndNumberRange.www.softbasic.net.sim
023. RCX-EquipmentQueries-Part3-ViewEquipmentDataUsingDifferentSelectionData.www.softbasic.net.sim
024. RCX-EquipmentTracking-ExecuteCurrentShipmentsStatusReport.www.softbasic.net.sim
025. RCX-EquipmentTracking-HowToConfigureTheStatusCheckConditionsAndEquipmentUsageOwnershipTypes.www.softbasic.net.sim
026. RCX-EquipmentTracking-HowToRunTrackingQueries.www.softbasic.net.sim
027. RCX-ERP-RouteDefinitionMaintenancePart1.www.softbasic.net.sim
028. RCX-ERP-RouteDefinitionMaintenancePart2.www.softbasic.net.sim
029. RCX-ERP-RouteDefinitionMaintenancePart3.www.softbasic.net.sim
030. RCX-LeaseSublease-ExecuteTheLeaseSubleaseExpenseReport.www.softbasic.net.sim
031. RCX-LeaseSublease-Part1-CreationAndMaintenance.www.softbasic.net.sim
032. RCX-MileageCredits-ExecuteMileageCreditReportingForOwnedAndLeasedRailcars.www.softbasic.net.sim
033. RE-Adjustments-ComparativeRent.www.softbasic.net.sim
034. RE-ContractManagementLease-OutRenewal.www.softbasic.net.sim
035. RE-ContractManagementNotice.www.softbasic.net.sim
036. RE-ContractMeasurements.www.softbasic.net.sim
037. RE-Contract-NoticeAndRenewal.www.softbasic.net.sim
038. RE-DynamicSelectionForLogicalDatabase.www.softbasic.net.sim
039. RE-EnterpriseExtension-Overview.www.softbasic.net.sim
040. RE-FreeAdjustmentContractAndProcessing.www.softbasic.net.sim
041. RE-FXDataTransfer.www.softbasic.net.sim
042. RE-IntegrationToCoAndFI.www.softbasic.net.sim
043. RE-MasterData-DefinePooledSpaces.www.softbasic.net.sim
044. RE-MasterData-DefinitionAndUseOfSets.www.softbasic.net.sim
045. RE-MasterData-OccupancyPlanning.www.softbasic.net.sim
046. RE-MasterData-VacancyReason.www.softbasic.net.sim
047. RE-McKessonEnhancementsAbstractsAndReports.www.softbasic.net.sim
048. RE-McKessonEnhancementsContractDocumentsClausesEtc.www.softbasic.net.sim
049. RE-Navigator.www.softbasic.net.sim
050. RE-One-TimeCorrespondenceWithMSWord.www.softbasic.net.sim
051. Reporting.www.softbasic.net.sim
052. RequestAndAdministerUsers.www.softbasic.net.sim
053. RE-R3EnterpriseFinancialsExtension2.00-ContractManagement.www.softbasic.net.sim
054. RE-R3EnterpriseFinancialsExtension2.00-ObjectGroups.www.softbasic.net.sim
055. RE-R3EnterpriseFinancialsExtension2.00-RentalObject.www.softbasic.net.sim

056. RE-RealEstateGeneralContract.www.softbasic.net.sim
057. RE-RealEstateObjectBrowser-Sets.www.softbasic.net.sim
058. RE-REInBW-OverviewOfRentalChargesReport.www.softbasic.net.sim
059. RE-ReportingInBusinessInformationWarehouse1.www.softbasic.net.sim
060. RE-ReportingInREFX.www.softbasic.net.sim
061. RE-Reporting-SetsAndInformationSystem.www.softbasic.net.sim
062. RE-ResubmissionReportingInTheGeneralContract.www.softbasic.net.sim
063. RE-SalesBasedContracts.www.softbasic.net.sim
064. RE-SalesBasedContracts-AnalysisAndCorrection.www.softbasic.net.sim
065. RE-SalesBasedContracts-ReportsAndSettlement.www.softbasic.net.sim
066. ReschedulingRun.www.softbasic.net.sim
067. RE-SCS-ContractWithAdvancedPaymentBookedAsRevenues.www.softbasic.net.sim
068. RE-SCS-CreateMultipleSettlementUnits.www.softbasic.net.sim
069. RE-SCS-DataExchangeSettlementUnit.www.softbasic.net.sim
070. RE-SCS-MetersForRentalObjects.www.softbasic.net.sim
071. RE-SCS-MetersForSettlementUnits.www.softbasic.net.sim
072. RE-SCS-ParticipationGroup.www.softbasic.net.sim
073. RE-SCS-TransferPostingsBetweenSettlementUnits.www.softbasic.net.sim
074. RE-SetUpUserFieldsForBTE.www.softbasic.net.sim
075. RE-StatusSelection.www.softbasic.net.sim
076. Retail-ArticleCopy.www.softbasic.net.sim
077. Retail-ArticleHierarchy.www.softbasic.net.sim
078. Retail-ArticleList.www.softbasic.net.sim
079. Retail-AssortmentDefinition.www.softbasic.net.sim
080. Retail-Characteristics.www.softbasic.net.sim
081. Retail-CoreMasterData.www.softbasic.net.sim
082. Retail-CreateShopForCategory.www.softbasic.net.sim
083. Retail-Discontinuation.www.softbasic.net.sim
084. Retail-FollowUpArticles.www.softbasic.net.sim
085. Retail-Intra-PromotionalSiteGroups.www.softbasic.net.sim
086. Retail-MaintenanceGroups.www.softbasic.net.sim
087. Retail-MarkdownProfilesAndAssignmentOfMarkdownProfiles.www.softbasic.net.sim
088. Retail-MassMaintenance.www.softbasic.net.sim
089. Retail-Pricat.www.softbasic.net.sim
090. Retail-PriceLevelGroups.www.softbasic.net.sim
091. Retail-PricePlanningWorkbench-ManualPriceChanges.www.softbasic.net.sim
092. Retail-PricePlanningWorkbench-Promotions.www.softbasic.net.sim
093. Retail-PromotionalDiscountsAtArticleHierarchyLevel.www.softbasic.net.sim

094. Retail-PromotionPlanning.www.softbasic.net.sim
095. Retail-PurchaseOrderGenerationWithOTBProcurement.www.softbasic.net.sim
096. Retail-Purchasing-ProcurementControlling.www.softbasic.net.sim
097. Retail-SAPHigherLevelPromotion.www.softbasic.net.sim
098. Retail-ShopCreation.www.softbasic.net.sim
099. Retail-ShopForDepartmentStore.www.softbasic.net.sim
100. Retail-SSMAndPPWMarkdowns.www.softbasic.net.sim
101. RE-TenantInformationSystem.www.softbasic.net.sim
102. RE-UserFieldsInGeneralContract.www.softbasic.net.sim
103. RE-UserFieldsInReporting.www.softbasic.net.sim
104. RE-UserFieldsOldExampleRentalUnit.www.softbasic.net.sim
105. RFID-SupportedProcessesPreconfiguredProcesses&Reports.www.softbasic.net.sim
106. RGX_RTG_Cfg_01_Relevance.www.softbasic.net.sim
107. RGX_RTG_Cfg_02_CondTabType.www.softbasic.net.sim
108. RGX_RTG_Cfg_03_Procedure.www.softbasic.net.sim
109. RGX_RTG_Cfg_04_Zones.www.softbasic.net.sim
110. RGX_RTG_Cfg_05_Records.www.softbasic.net.sim
111. RGX-RoutingGuideConfiguration-Part1-CreateAndMaintainRelevanceForRoutingGuide.www.softbasic.net.sim
112. RGX-RoutingGuideConfiguration-Part2-CreateAndMaintainConditionTablesAndConditionTypes.www.softbasic.net.sim
113. RGX-RoutingGuideConfiguration-Part3-CreateAndMaintainARoutingGuideProcedure.www.softbasic.net.sim
114. RGX-RoutingGuideConfiguration-Part5-CreateAndMaintainRoutingGuideRecords.www.softbasic.net.sim
115. RoadmapAuthoring-Construction.www.softbasic.net.sim
116. RoadmapAuthoring-Modification.www.softbasic.net.sim
117. RoadmapUsage.www.softbasic.net.sim
118. RoleManagement.www.softbasic.net.sim

Volume name is SAP Simulator

Directory of K:\Room - ERP Learning\SAP Simulator\SAP Simulator - Original\S EXTRACTED\
=====

001. SalesSupportAndDynamicProductProposal.www.softbasic.net.sim
002. SalesSupportWithDynamicProductProposal.www.softbasic.net.sim
003. SAMLService.www.softbasic.net.sim
004. SAP Best Practices - Technical Overview.sim
005. SAP Best Practices - Technical Overview.www.softbasic.net.sim
006. SAP Collections Management.www.softbasic.net.sim
007. SAP EP 6.0 User Management.www.softbasic.net.sim
008. SAP Solution Manager Self Diagnosis.www.softbasic.net.sim

009. SAPBestPractices-PositioningOverview.www.softbasic.net.sim
010. SAPDOTNETCONNECTOR.SIM
011. SAPGui-i18n-Settings.www.softbasic.net.sim
012. SAPGui-NavigationITutorialPart1.www.softbasic.net.sim
013. SAPGui-NavigationITutorialPart2.www.softbasic.net.sim
014. SAPGui-NavigationITutorialPart3.www.softbasic.net.sim
015. SAPGui-NavigationITutorialPart4.www.softbasic.net.sim
016. SAPSolutionManagerDiagnosticsOperation.www.softbasic.net.sim
017. SAPSolutionManagere-learningManagement.www.softbasic.net.sim
018. SAPSolutionManagerForTheImplementationOfmySAPCRM.www.softbasic.net.sim
019. SAPSolutionManagerForTheOperationOfmySAPCRM-BusinessProcessMonitoring.www.softbasic.net.sim
020. SAPSolutionManagerinanImplementationProject.www.softbasic.net.sim
021. SAPWebApplicationServer-J2EESecurity.www.softbasic.net.sim
022. SD-BatchRecall.www.softbasic.net.sim
023. SDCCN Handling the Task Processor Background Job.www.softbasic.net.sim
024. SDCCN Local Activation.www.softbasic.net.sim
025. SDCCN Overview.www.softbasic.net.sim
026. SDCCN Scheduling the EWA.www.softbasic.net.sim
027. SDCCN Task Handling.www.softbasic.net.sim
028. SDCCN-HandlingTheTaskProcessorBackgroundJob.www.softbasic.net.sim
029. SDCCN-LocalActivation.www.softbasic.net.sim
030. SDCCN-Overview.www.softbasic.net.sim
031. SDCCN-SchedulingTheSAPEarlyWatchAlert.www.softbasic.net.sim
032. SDCCN-TaskHandling.www.softbasic.net.sim
033. SD-CreateOutputControlRecordsConditionRecordsBilling.www.softbasic.net.sim
034. SD-CreateOutputControlRecordsConditionRecordsSales.www.softbasic.net.sim
035. SD-CreateOutputControlRecordsConditionRecordsShipping.www.softbasic.net.sim
036. SD-CrossCompanySalesOrderProcessingPart1.www.softbasic.net.sim
037. SD-CrossCompanySalesOrderProcessingPart2.www.softbasic.net.sim
038. SD-CustomerConsignmentProcessing.www.softbasic.net.sim
039. SD-DesignRegistration.www.softbasic.net.sim
040. SD-EngineerToOrderQuotationProcessingPart1.www.softbasic.net.sim
041. SD-EngineerToOrderQuotationProcessingPart2.www.softbasic.net.sim
042. SD-EngineerToOrderQuotationProcessingPart3.www.softbasic.net.sim
043. SD-EngineerToOrderSalesOrderProcessingPart1.www.softbasic.net.sim
044. SD-EngineerToOrderSalesOrderProcessingPart2.www.softbasic.net.sim
045. SD-EngineerToOrderSalesOrderProcessingPart3.www.softbasic.net.sim
046. SD-EngineerToOrderSalesOrderProcessingPart4.www.softbasic.net.sim

047. SD-ExtendedSalesOrderProcessing.www.softbasic.net.sim
048. SD-MakeToOrderQuotationProcessingPart1.www.softbasic.net.sim
049. SD-MakeToOrderQuotationProcessingPart2.www.softbasic.net.sim
050. SD-MakeToOrderQuotationProcessingPart3.www.softbasic.net.sim
051. SD-MakeToOrderSalesOrderProcessingPart1.www.softbasic.net.sim
052. SD-MakeToOrderSalesOrderProcessingPart2.www.softbasic.net.sim
053. SD-MakeToOrderSalesOrderProcessingPart3.www.softbasic.net.sim
054. sd-make-to-stockproductionunrelatedtospecificcustomerorderpart1.sim
055. SD-Make-To-StockProductionUnrelatedToSpecficiCustomerOrderPart1.www.softbasic.net.sim
056. sd-make-to-stockproductionunrelatedtospecificcustomerorderpart2.sim
057. SD-Make-To-StockProductionUnrelatedToSpecficiCustomerOrderPart2.www.softbasic.net.sim
058. sd-make-to-stockproductionunrelatedtospecificcustomerorderpart3.sim
059. SD-Make-To-StockProductionUnrelatedToSpecficiCustomerOrderPart3.www.softbasic.net.sim
060. sd-make-to-stockproductionunrelatedtospecificcustomerorderpart4.sim
061. SD-Make-To-StockProductionUnrelatedToSpecficiCustomerOrderPart4.www.softbasic.net.sim
062. sd-salesorderprocessingwithdummycustomer.sim
063. SD-SalesOrderProcessingWithDummyCustomer.www.softbasic.net.sim
064. SD-SalesSupportWithDynamicProductProposal-Merchandise-DrivenMasterData.www.softbasic.net.sim
065. SD-SalesSupportWithDynamicProductProposal-SalesSupport.www.softbasic.net.sim
066. SD-SerializedSalesOrderProcessingRosettaNetBusinessConnectorIntegrationPart1.www.softbasic.net.sim
067. SD-SerializedSalesOrderProcessingRosettaNetBusinessConnectorIntegrationPart2.www.softbasic.net.sim
068. SD-SerializedSalesOrderProcessingRosettaNetBusinessConnectorIntegrationPart3.www.softbasic.net.sim
069. SD-SerializedSalesOrderProcessingRosettaNetBusinessConnectorIntegrationPart4.www.softbasic.net.sim
070. SD-ServiceProcessingOnSiteServiceTechnicianDeploymentPart1.www.softbasic.net.sim
071. SD-ServiceProcessingOnSiteServiceTechnicianDeploymentPart2.www.softbasic.net.sim
072. SD-ServiceProcessingOnSiteServiceTechnicianDeploymentPart3.www.softbasic.net.sim
073. SD-ServiceProcessingOnSiteServiceTechnicianDeploymentPart4.www.softbasic.net.sim
074. SD-ServiceProcessingOnSiteServiceTechnicianDeploymentPart5.www.softbasic.net.sim
075. SD-ServiceProcessingReturnProcessing.www.softbasic.net.sim
076. SecureStorageService.www.softbasic.net.sim
077. SelfDiagnosisOfSAPSolutionManager.www.softbasic.net.sim
078. SEM-BalanceSheetPlanning.www.softbasic.net.sim
079. SEM-BCS_XBRL_SAP.www.softbasic.net.sim
080. SEM-BCSConsolidationMonitor.www.softbasic.net.sim
081. SEM-BCSCreateConsolidationDataBasis.www.softbasic.net.sim
082. SEM-BCSCurrencyTranslationMethod.www.softbasic.net.sim
083. SEM-BCSLayoutCurrencyTranslation.www.softbasic.net.sim
084. SEM-BCSManagementCockpit.www.softbasic.net.sim

085. SEM-BCSMasterData.www.softbasic.net.sim
086. SEM-BCSMasterDataFSItems.www.softbasic.net.sim
087. SEM-BCSMMeasureAnalysis.www.softbasic.net.sim
088. SEM-BCSMMeasureBuilderBenchmark.www.softbasic.net.sim
089. SEM-BCSMMeasureBuilderTool.www.softbasic.net.sim
090. SEM-BCSMMeasureTree.www.softbasic.net.sim
091. SEM-BCSPersonalizationUserViews.www.softbasic.net.sim
092. SEM-BCSReturnofCapitalEmployed.www.softbasic.net.sim
093. SEM-BCSRiskCatalog.www.softbasic.net.sim
094. SEM-BCSSalesPlanning.www.softbasic.net.sim
095. SEM-BCSSAPMeasureCatalog.www.softbasic.net.sim
096. SEM-BCSScorecardComparison.www.softbasic.net.sim
097. SEM-BCSShareholderValueAdded.www.softbasic.net.sim
098. SEM-BCSShareholderValueScenarioPlanning.www.softbasic.net.sim
099. SEM-BCSTaskList.www.softbasic.net.sim
100. SEM-BCSWEBValueDriveTreeStand-Alone.www.softbasic.net.sim
101. SEM-BCSWorkbenchNavigation.www.softbasic.net.sim
102. SEM-BSCDrilldown.www.softbasic.net.sim
103. SEM-BSCPPersonalScore.www.softbasic.net.sim
104. SEM-BSCScorecardMonitor.www.softbasic.net.sim
105. SEM-BSCScoreTrendNumberAssessments.www.softbasic.net.sim
106. SEM-BSCSetFilter.www.softbasic.net.sim
107. SEM-BSCStrategicBusinessUnit1.www.softbasic.net.sim
108. SEM-BSCTemplateViewer.www.softbasic.net.sim
109. SEM-BSCWebOverview.www.softbasic.net.sim
110. SEM-BSCWebReport.www.softbasic.net.sim
111. Service Desk Autoreaction Method for Non SAP SolMan CEN.www.softbasic.net.sim
112. ServiceContractsAndEntitlements(Warranties).www.softbasic.net.sim
113. ServiceDesk.www.softbasic.net.sim
114. ServiceLevelReporting.www.softbasic.net.sim
115. ServiceMap.www.softbasic.net.sim
116. Service-On-SiteServicePart1.www.softbasic.net.sim
117. Service-On-SiteServicePart2.www.softbasic.net.sim
118. ServiceProcess-DemoAndExercises.www.softbasic.net.sim
119. ServiceReporting.www.softbasic.net.sim
120. Setting Up SAP Netweaver administrator.www.softbasic.net.sim
121. Setting Up the Global Workload Monitor.www.softbasic.net.sim
122. SetupEarlyWatchAlertForSAPSolutionManager3.2.www.softbasic.net.sim

123. SetupEarlyWatchAlertforSAPSolutionManager4.0.www.softbasic.net.sim
124. Single Sign On to the SAP EP using SAP Passports.www.softbasic.net.sim
125. SingleSign-OnToSAPEnterprisePortalUsingSAPPassports.www.softbasic.net.sim
126. SmartForms-TutorialDeltaPart1.www.softbasic.net.sim
127. SmartForms-TutorialDeltaPart6.www.softbasic.net.sim
128. SOA-MICAndApprovaBizRights(demo).www.softbasic.net.sim
129. SOA-MICReporting.www.softbasic.net.sim
130. SOA-MICSignoff.www.softbasic.net.sim
131. SOA-Tutorial-AuditInformationSystem.www.softbasic.net.sim
132. SOA-Tutorial-MICAssignmentOfBusinessUsersToRoles.www.softbasic.net.sim
133. SOA-Tutorial-MICAssignmentOfControlToRisk(P-CO-R).www.softbasic.net.sim
134. SOA-Tutorial-MICAssignmentOfProcessesToOrg.Unit.www.softbasic.net.sim
135. SOA-Tutorial-MICCentralProcessCatalog.www.softbasic.net.sim
136. SOA-Tutorial-MICControlDesignAssessment.www.softbasic.net.sim
137. SOA-Tutorial-MICControlEfficiencyAssessment.www.softbasic.net.sim
138. SOA-Tutorial-MICDashboard.www.softbasic.net.sim
139. SOA-Tutorial-MICInitialDocumentationOfControls.www.softbasic.net.sim
140. SOA-Tutorial-MICOrg.HierarchyMaintenance.www.softbasic.net.sim
141. SOA-Tutorial-MICOrg.Unit-SpecificScheduling.www.softbasic.net.sim
142. SOA-Tutorial-MICProcessDesignAssessment.www.softbasic.net.sim
143. SOA-Tutorial-MICTesting.www.softbasic.net.sim
144. SOA-Tutorial-Whistleblower.www.softbasic.net.sim
145. SOLMAN Authorizations in SOLMAN.www.softbasic.net.sim
146. SOLMAN Availability reporting.www.softbasic.net.sim
147. SOLMAN Central System Administration - Customizing.sim
148. SOLMAN Central System Administration - Handling of Tasks.www.softbasic.net.sim
149. SOLMAN Central System Administration Customizing.www.softbasic.net.sim
150. SOLMAN Central System Administration Handling of Tasks.www.softbasic.net.sim
151. SOLMAN Create a Solution.www.softbasic.net.sim
152. SOLMAN EWA Reporting BI Preparation.www.softbasic.net.sim
153. SOLMAN Maintain Business Processes in Solution Directory.www.softbasic.net.sim
154. SOLMAN Maintain Logical Components in Solution Directory.www.softbasic.net.sim
155. SOLMAN Management of Top Issues.www.softbasic.net.sim
156. SOLMAN Process Management of Issues.www.softbasic.net.sim
157. SOLMAN Service Level Reporting.www.softbasic.net.sim
158. SOLMAN Service Reporting.www.softbasic.net.sim
159. SOLMAN Setting up EWA.www.softbasic.net.sim
160. SOLMAN SMSY Create RFC Connections with assistant.www.softbasic.net.sim

161. SOLMAN SMSY Creating systems with assistant.www.softbasic.net.sim
162. SOLMAN SMSY Delete RFC Connections.www.softbasic.net.sim
163. SOLMAN System Monitoring - Alert Lis.www.softbasic.net.sim
164. SOLMAN System Monitoring Graphic.www.softbasic.net.sim
165. SolMan3.1-EmployeePerformanceManagement.www.softbasic.net.sim
166. SolMan3.2-ChangeRequestManagement-UrgentCorrection.www.softbasic.net.sim
167. SolMan3.2-ComparingCustomizingwiththeCustomizingScout.www.softbasic.net.sim
168. SolMan3.2-ConfigurationGuideGeneration.www.softbasic.net.sim
169. SolMan3.2-CreateBusinessProcesses.www.softbasic.net.sim
170. SolMan3.2-eLearningManagementwiththeSAPSolutionManager.www.softbasic.net.sim
171. SolMan3.2-HowtoCreateBCSets.www.softbasic.net.sim
172. SolMan3.2-mySAPCRMBusinessScenarioContent.www.softbasic.net.sim
173. SolMan3.2-OrganizeandPerformTesting.www.softbasic.net.sim
174. SolMan3.2-ProjectPreparation-BSP.www.softbasic.net.sim
175. SolMan3.2-SolutionLandscape.www.softbasic.net.sim
176. SolMan3.2-SupportDeskPoweredbySAPCRM.www.softbasic.net.sim
177. SolMan3.2-SynchronizationBetweenARISandSAPSolutionManager.www.softbasic.net.sim
178. SolMan3.2-UpgradetomySAPERP.www.softbasic.net.sim
179. SolMan4.0-AlertList.www.softbasic.net.sim
180. SolMan4.0-AuthorizationsinSAPSolutionManager.www.softbasic.net.sim
181. SolMan4.0-Autoreaction-ServiceDesk.www.softbasic.net.sim
182. SolMan4.0-AvailabilityReporting.www.softbasic.net.sim
183. SolMan4.0-BestPracticesforSolutionManagement.www.softbasic.net.sim
184. SolMan4.0-BPM-AlertHandling.www.softbasic.net.sim
185. SolMan4.0-BPM-Navigation.www.softbasic.net.sim
186. SolMan4.0-BSPWebApplicationforSAPSolutionManager.www.softbasic.net.sim
187. SolMan4.0-CentralSystemAdministration-Customizing.www.softbasic.net.sim
188. SolMan4.0-CentralSystemAdministration-HandlingofTasks.www.softbasic.net.sim
189. SolMan4.0-ChangeControlofDocuments-CheckInandCheckOut-Functionality.www.softbasic.net.sim
190. SolMan4.0-ComparingCustomizingwiththeCustomizingScout.www.softbasic.net.sim
191. SolMan4.0-CreationofInstallationUpgradeKeyforSAPSoftware.www.softbasic.net.sim
192. SolMan4.0-CRMScenariosandImplementationwithSAPSolutionManager.www.softbasic.net.sim
193. SolMan4.0-CustomizingDistribution.www.softbasic.net.sim
194. SolMan4.0-e-LearningManagementwiththeSAPSolutionManager.www.softbasic.net.sim
195. SolMan4.0-ERP2004KeyGeneration.www.softbasic.net.sim
196. SolMan4.0-ERPFinance.www.softbasic.net.sim
197. SolMan4.0-ERPHCM.www.softbasic.net.sim
198. SolMan4.0-HandoverProjectsintoOperationsMode.www.softbasic.net.sim

199. SolMan4.0-HowtoCreateBCSetsintheSolutionManager.www.softbasic.net.sim
200. SolMan4.0-IssueTrackingExpertiseonDemand-Overview.www.softbasic.net.sim
201. SolMan4.0-mySAPERP-UsingtheUpgradeRoadmap.www.softbasic.net.sim
202. SolMan4.0-mySAPPLMBusinessProcesses.www.softbasic.net.sim
203. SolMan4.0-mySAPSCM2005BusinessProcesses(ST-ICO150_700Patch0001).www.softbasic.net.sim
204. SolMan4.0-mySAPSCM-UsingImplementationContent(ST-ICO150_700Patch0002).www.softbasic.net.sim
205. SolMan4.0-mySAPSCM-UsingtheUpgradeRoadmap.www.softbasic.net.sim
206. SolMan4.0-OrganizeandPerformTesting.www.softbasic.net.sim
207. SolMan4.0-ProjectPreparation-BSP.www.softbasic.net.sim
208. SolMan4.0-ProjectPreparationwiththeWebinterface-Scenarios.www.softbasic.net.sim
209. SolMan4.0-Reporting.www.softbasic.net.sim
210. SolMan4.0-RoadmapAuthoring-Construction.www.softbasic.net.sim
211. SolMan4.0-RoadmapAuthoring-Modification.www.softbasic.net.sim
212. SolMan4.0-RoadmapUsage.www.softbasic.net.sim
213. SolMan4.0-SAPSolutionManagerinanImplementationProject.www.softbasic.net.sim
214. SolMan4.0-SDCCN-HandlingtheTaskProcessorBackgroundJob.www.softbasic.net.sim
215. SolMan4.0-SDCCN-LocalActivation.www.softbasic.net.sim
216. SolMan4.0-SDCCN-Overview.www.softbasic.net.sim
217. SolMan4.0-SDCCN-SchedulingtheSAPEarlyWatchAlert.www.softbasic.net.sim
218. SolMan4.0-SDCCN-TaskHandling.www.softbasic.net.sim
219. SolMan4.0-SelfDiagnosisofSAPSolutionManager.www.softbasic.net.sim
220. SolMan4.0-ServiceLevelReporting.www.softbasic.net.sim
221. SolMan4.0-ServiceReporting.www.softbasic.net.sim
222. SolMan4.0-SettingUpCustomizingDistributionandComparison.www.softbasic.net.sim
223. SolMan4.0-SetupEarlyWatchAlertforSAPSolutionManager4.0.www.softbasic.net.sim
224. SolMan4.0-SolutionDirectory-AddBusinessScenarios.www.softbasic.net.sim
225. SolMan4.0-SolutionDirectory-AddSolutionAttributes.www.softbasic.net.sim
226. SolMan4.0-SolutionDirectory-CreateSolutionAddLogicalComponent.www.softbasic.net.sim
227. SolMan4.0-SolutionDirectory-ModifySystemGraphic.www.softbasic.net.sim
228. SolMan4.0-SynchronizationBetweenARISandSAPSolutionManager.www.softbasic.net.sim
229. SolMan4.0-SystemLandscape(SMSY)-AnalyzingtheSystemLandscape.www.softbasic.net.sim
230. SolMan4.0-SystemLandscape(SMSY)-ChangeProductAssignments.www.softbasic.net.sim
231. SolMan4.0-SystemLandscape(SMSY)-CreateProducts.www.softbasic.net.sim
232. SolMan4.0-SystemLandscape(SMSY)-CreatingRFCConnections.www.softbasic.net.sim
233. SolMan4.0-SystemLandscape(SMSY)-CreatingSystems.www.softbasic.net.sim
234. SolMan4.0-SystemLandscape(SMSY)-SetupofDataCollection.www.softbasic.net.sim
235. SolMan4.0-SystemLandscape(SMSY)-WorkingwithAttributes.www.softbasic.net.sim
236. SolMan4.0-SystemMonitoring-Graphic.www.softbasic.net.sim

237. SolMan4.0-SystemMonitoring-Setup.www.softbasic.net.sim
238. SolMan4.0-UpgradetomySAPERP.www.softbasic.net.sim
239. SolMan4.0-UsageofSolutionManagerinCRM5.0UpgradeProject.www.softbasic.net.sim
240. SolMan40-CS10-MobilophoneInc.-ServiceDesk.www.softbasic.net.sim
241. SolMan40-CS11-MobilophoneInc.-ChangeRequestManagement.www.softbasic.net.sim
242. SolMan40-CS17-IntegrationWizard.www.softbasic.net.sim
243. SolMan40-CS20-ServiceDesk-CreateProblemMessages.www.softbasic.net.sim
244. SolMan40-CS21-ServiceDesk-ProblemMessageoutofSatelliteSystems.www.softbasic.net.sim
245. SolMan40-CS22-ServiceDesk-ProcessMessage.www.softbasic.net.sim
246. SolMan40-CS23-ServiceDesk-CreateAttachments.www.softbasic.net.sim
247. SolMan40-CS24-ServiceDesk-ForwardMessagetoSAP.www.softbasic.net.sim
248. SolMan40-CS25-ServiceDesk-CreateChangeRequest.www.softbasic.net.sim
249. SolMan40-CS26-ServiceDesk-ConfirmMessage.www.softbasic.net.sim
250. SolMan40-CS29-IncidentManagementwithExternalHelpDesk.www.softbasic.net.sim
251. SolMan40-CS31-InteractionCenterWebClientinSAPSolutionManagerServiceDesk.www.softbasic.net.sim
252. SolMan40-CS33-ChangeRequestManagement-Part1.www.softbasic.net.sim
253. SolMan40-CS35-ChangeRequestManagement-Part2.www.softbasic.net.sim
254. SolMan40-CS36-ChangeRequestManagement-DevelopmentWithoutRelease.www.softbasic.net.sim
255. SolMan40-CS37-ChangeRequestManagement-DevelopmentwithRelease.www.softbasic.net.sim
256. SolMan40-CS38-ChangeRequestManagement-Test.www.softbasic.net.sim
257. SolMan40-CS39-ChangeRequestManagement-GoLive.www.softbasic.net.sim
258. SolMan40-CS40-ChangeRequestManagement-UrgentCorrection.www.softbasic.net.sim
259. SolMan40-CS41-CreateCriticalObjects.www.softbasic.net.sim
260. SolMan40-CS42-ActivateCriticalObjectsCheck.www.softbasic.net.sim
261. SolMan40-CS43-Check-out.Check-inofBusinessStructures.www.softbasic.net.sim
262. SolMan40-CS48-MaintenanceOptimizer.www.softbasic.net.sim
263. SolMan40-SC10-MobilPhoneInc.-Implementation.www.softbasic.net.sim
264. SolMan40-SC12-SAPSolutionManagerinAnImplementationProject.www.softbasic.net.sim
265. SolMan40-SC17-RoadmapUsage.www.softbasic.net.sim
266. SolMan40-SC18-RoadmapAuthoring-Construction.www.softbasic.net.sim
267. SolMan40-SC19-RoadmapAuthoring-Modification.www.softbasic.net.sim
268. SolMan40-SC20-ProjectPreparation-BSP.www.softbasic.net.sim
269. SolMan40-SC21-ChangeControlofDocuments-CheckInandCheckOut-Functionality.www.softbasic.net.sim
270. SolMan40-SC24-IntegrationofARISinSAPSolutionManager.www.softbasic.net.sim
271. SolMan40-SC25-SynchronizationBetweenARISandSAPSolutionManager.www.softbasic.net.sim
272. SolMan40-SC26-HandoverProjectsintoOperationsMode.www.softbasic.net.sim
273. SolMan40-SC27-SAPBestPractices-Concept.www.softbasic.net.sim
274. SolMan40-SC30-Reporting.www.softbasic.net.sim

275. SolMan40-SC33-CRMScenariosandImplementationwithSAPSolutionManager.www.softbasic.net.sim
276. SolMan40-SC37-UsageofSolutionManagerinCRM5.0UpgradeProject.www.softbasic.net.sim
277. SolMan40-SC39-CreationofInstallation-UpgradeKeyforSAPSoftware.www.softbasic.net.sim
278. SolMan40-SC40-ProjectPreparationwiththeWebinterface-Scenarios.www.softbasic.net.sim
279. SolMan40-SC41-mySAPERP-UsingtheUpgradeRoadmap.www.softbasic.net.sim
280. SolMan40-SC42-ERPFinance.www.softbasic.net.sim
281. SolMan40-SC43-ERPHCM.www.softbasic.net.sim
282. SolMan40-SC44-UpgradetomySAPERP.www.softbasic.net.sim
283. SolMan40-SC45-mySAPPLMBusinessProcesses.www.softbasic.net.sim
284. SolMan40-SC46-mySAPSCM2005BusinessProcesses(ST-ICO150_700-Patch0001).www.softbasic.net.sim
285. SolMan40-SC47-mySAPSCM-UsingImplementationContent(ST-ICO150_700-Patch0002).www.softbasic.net.sim
286. SolMan40-SC48-mySAPSCM-UsingtheUpgradeRoadmap.www.softbasic.net.sim
287. SolMan40-SC50-HowtoCreateBCSetsintheSolutionManager.www.softbasic.net.sim
288. SolMan40-SC52-CustomizingDistribution.www.softbasic.net.sim
289. SolMan40-SC53-ComparingCustomizingwiththeCustomizingScout.www.softbasic.net.sim
290. SolMan40-SC54-SettingUpCustomizingDistributionandComparison.www.softbasic.net.sim
291. SolMan40-SC56-BPM-Navigation.www.softbasic.net.sim
292. SolMan40-SC57-BPM-AlertHandling.www.softbasic.net.sim
293. SolMan40-SC63-OrganizeandPerformTesting.www.softbasic.net.sim
294. SolMan40-SC64-TestWorkbenchEnhancements.www.softbasic.net.sim
295. SolMan40-TC10-MobilPhoneInc.-MonitoringandReporting.www.softbasic.net.sim
296. SolMan40-TC11-BSPWebApplicationforSAPSolutionManager.www.softbasic.net.sim
297. SolMan40-TC12-AuthorizationsinSAPSolutionManager.www.softbasic.net.sim
298. SolMan40-TC13-SelfDiagnosisofSAPSolutionManager.www.softbasic.net.sim
299. SolMan40-TC14-BestPracticesforSolutionManagement.www.softbasic.net.sim
300. SolMan40-TC15-CreationofInstallation-UpgradeKeyforSAPSoftware.www.softbasic.net.sim
301. SolMan40-TC16-SystemLandscape(SMSY)-SetupofDataCollection.www.softbasic.net.sim
302. SolMan40-TC17-SystemLandscape(SMSY)-CreatingSystems.www.softbasic.net.sim
303. SolMan40-TC18-SMSY-CreatingRFCConnections-withAssistant.www.softbasic.net.sim
304. SolMan40-TC19-SMSY-DeletingRFCConnections.www.softbasic.net.sim
305. Solman40-TC20-SystemLandscape(SMSY)-CreateLogicalComponents.www.softbasic.net.sim
306. SolMan40-TC21-AssignSystemstonewandExistingLogicalComponents-withAssistant.www.softbasic.net.sim
307. SolMan40-TC22-SystemLandscape(SMSY)-CreateProducts.www.softbasic.net.sim
308. SolMan40-TC23-SystemLandscape(SMSY)-ChangeProductAssignments.www.softbasic.net.sim
309. SolMan40-TC24-SystemLandscape(SMSY)-WorkingwithAttributes.www.softbasic.net.sim
310. Solman40-TC25-SystemLandscape(SMSY)-AnalyzingtheSystemLandscape.www.softbasic.net.sim
311. SolMan40-TC27-SolutionDirectory-CreateSolution-AddLogicalComponent.www.softbasic.net.sim
312. SolMan40-TC28-SolutionDirectory-AddSolutionAttributes.www.softbasic.net.sim

313. SolMan40-TC29-SolutionDirectory-AddBusinessScenarios.www.softbasic.net.sim
314. SolMan40-TC30-SolutionDirectory-ModifySystemGraphic.www.softbasic.net.sim
315. SolMan40-TC32-SDCCN-Overview.www.softbasic.net.sim
316. SolMan40-TC33-SDCCN-LocalActivation.www.softbasic.net.sim
317. SolMan40-TC34-SDCCN-HandlingtheTaskProcessorBackgroundJob.www.softbasic.net.sim
318. SolMan40-TC35-SDCCN-TaskHandling.www.softbasic.net.sim
319. SolMan40-TC36-SDCCN-SchedulingtheSAPEarlyWatchAlert.www.softbasic.net.sim
320. SolMan40-TC38-MaintainLogicalComponentsinSolutionDirectory.www.softbasic.net.sim
321. SolMan40-TC39-MaintainBusinessProcessesinSolutionDirectory.www.softbasic.net.sim
322. SolMan40-TC40-Process-ManagementofIssues.www.softbasic.net.sim
323. SolMan40-TC41-Process-ManagementofTopIssues.www.softbasic.net.sim
324. SolMan40-TC47-SetupEarlyWatchAlertforSAPSolutionManager4.0.www.softbasic.net.sim
325. SolMan40-TC50-EWAReporting-BIPreparation.www.softbasic.net.sim
326. SolMan40-TC51-EWAReporting-BIOperations.www.softbasic.net.sim
327. SolMan40-TC52-ServiceReporting.www.softbasic.net.sim
328. SolMan40-TC53-ServiceLevelReporting.www.softbasic.net.sim
329. SolMan40-TC57-AvailabilityReporting.www.softbasic.net.sim
330. SolMan40-TC59-SystemMonitoring-Setup.www.softbasic.net.sim
331. SolMan40-TC60-SystemMonitoring-Graphic.www.softbasic.net.sim
332. SolMan40-TC61-AlertList.www.softbasic.net.sim
333. SolMan40-TC62-Auto-reaction-ServiceDesk.www.softbasic.net.sim
334. SolMan40-TC63-ServiceDeskAuto-ReactionMethodforNon-SAPSolManCEN.www.softbasic.net.sim
335. SolMan40-TC64-CentralSystemAdministration-Customizing.www.softbasic.net.sim
336. SolMan40-TC65-CentralSystemAdministration-HandlingofTasks.www.softbasic.net.sim
337. SolMan40-TC67-BPM-Navigation.www.softbasic.net.sim
338. SolMan40-TC68-BPM-AlertHandling.www.softbasic.net.sim
339. SolMan40-TC73-MobilPhoneInc.-Implementation.www.softbasic.net.sim
340. SolMan40-TC74-MobilPhoneInc.-ServiceDesk.www.softbasic.net.sim
341. SolMan40-TC75-MobilPhoneInc.-ChangeRequestManagement.www.softbasic.net.sim
342. SolMan-BestPractices.www.softbasic.net.sim
343. SolMan-BusinessProcessandInterfaceMonitoring.www.softbasic.net.sim
344. SolMan-BusinessProcessMonitoring.www.softbasic.net.sim
345. SolMan-CreateandMaintainSolutions.www.softbasic.net.sim
346. SolMan-CRMBusinessContent.www.softbasic.net.sim
347. SolMan-InterfaceMonitoring.www.softbasic.net.sim
348. SolMan-Introduction.www.softbasic.net.sim
349. SolMan-IssueTrackingNormalIssues.www.softbasic.net.sim
350. SolMan-IssueTrackingTopIssues.www.softbasic.net.sim

351. SolMan-MaintenanceOptimizer.www.softbasic.net.sim
352. SolMan-ProjectPreparation.www.softbasic.net.sim
353. SolMan-Reporting.www.softbasic.net.sim
354. SolMan-RoadmapUsage.www.softbasic.net.sim
355. SolMan-ServiceLevelReporting.www.softbasic.net.sim
356. SolMan-SolutionManager.www.softbasic.net.sim
357. SolMan-SolutionManagerBestPractices.www.softbasic.net.sim
358. SolMan-SupportDesk.www.softbasic.net.sim
359. SolMan-SystemMonitoring.www.softbasic.net.sim
360. SolMan-UsingSecurityOptimizationSelfService.www.softbasic.net.sim
361. Solution and Business process monitoring.www.softbasic.net.sim
362. Solution Directory Add Attributes.www.softbasic.net.sim
363. SolutionDirectory00-CreateASolution-AddLogicalComponents.www.softbasic.net.sim
364. SolutionDirectory01-AddSolutionAttributes.www.softbasic.net.sim
365. SolutionDirectory02-AddBusinessScenarios.www.softbasic.net.sim
366. SolutionDirectory-AddBusinessScenarios.www.softbasic.net.sim
367. SolutionDirectory-ModifySystemGraphic.www.softbasic.net.sim
368. SolutionManagerContent-mySAPCRMBusinessScenario.www.softbasic.net.sim
369. SpotConsulting.www.softbasic.net.sim
370. StoreBusinessOnlineViaSAPRetailStore.www.softbasic.net.sim
371. SynchronizationBetweenARISAndSAPSolutionManager.www.softbasic.net.sim
372. System Landscape Creating Logical Components.www.softbasic.net.sim
373. System Landscape Setup of Data Collection.www.softbasic.net.sim
374. SystemLandscape(SMSY)-CreateProducts.www.softbasic.net.sim
375. SystemLandscape(SMSY)-WorkingWithAttributes.www.softbasic.net.sim
376. SystemMonitoring-Setup.www.softbasic.net.sim

Volume name is SAP Simulator

Directory of K:\Room - ERP Learning\SAP Simulator\SAP Simulator - Original\T EXTRACTED\

=====

001. TechnicalUpgrade3.1To3.2-Preparation.www.softbasic.net.sim
002. TechnicalUpgrade3.1To3.2-Processing.www.softbasic.net.sim
003. The_NewServiceDataControlCentre-Overview.www.softbasic.net.sim
004. TheCustomizingOfmySAPCRM.www.softbasic.net.sim
005. TheNewServiceDataControlCentre-Overview.www.softbasic.net.sim
006. TravelManagement-ERP2004-Travel&ExpensesAsSelf-Service.www.softbasic.net.sim
007. TravelManagement-MobileTime&Travel-OfflineTravelExpenses.www.softbasic.net.sim

- 008. TravelManagement-R3-TravelerSelf-ServiceInTheSAPPortal.www.softbasic.net.sim
- 009. TravelManagement-SAPTravelPlanningWithGalileo.www.softbasic.net.sim
- 010. TravelManagement-TravelerSelf-Service.www.softbasic.net.sim

Volume name is SAP Simulator

Directory of K:\Room - ERP Learning\SAP Simulator\SAP Simulator - Original\U EXTRACTED\
=====

- 001. Unicode-ConversionofSAPSystemstoUnicode-Demo1.www.softbasic.net.sim
- 002. Unicode-ConversionofSAPSystemstoUnicode-Presentation.www.softbasic.net.sim
- 003. Unicode-ConversionofSAPSystemstoUnicodeûDemo1.www.softbasic.net.sim
- 004. UpgradeTomySAPERP.www.softbasic.net.sim
- 005. UsageofSolutionManagerinCRM5.0UpgradeProject.www.softbasic.net.sim
- 006. User Management in the WAS 6.40 UME.www.softbasic.net.sim
- 007. UserManagementInTheEnterprisePortal(UserInterface).www.softbasic.net.sim
- 008. UserStorageService.www.softbasic.net.sim

Volume name is SAP Simulator

Directory of K:\Room - ERP Learning\SAP Simulator\SAP Simulator - Original\V EXTRACTED\
=====

- 001. VariantConfiguration-AssemblyProcessingPart2.www.softbasic.net.sim
- 002. VariantConfiguration-CreditLimitCheck.www.softbasic.net.sim
- 003. VariantConfiguration-ProductModelingEnvironment.www.softbasic.net.sim
- 004. VariantConfiguration-WithLegalControl.www.softbasic.net.sim
- 005. VariantConfiguration-WithMaterialVariantPart3.www.softbasic.net.sim
- 006. VirusScanServerBasics-ConfigureRFCDestination.www.softbasic.net.sim
- 007. VirusScanServerBasics-ProgrammingExample.www.softbasic.net.sim
- 008. VirusScanServerBasics-TheVirusScanTrace.www.softbasic.net.sim
- 009. VisualComposer-ModelingBIDataPart2.www.softbasic.net.sim

Volume name is SAP Simulator

Directory of K:\Room - ERP Learning\SAP Simulator\SAP Simulator - Original\W EXTRACTED\
=====

- 001. WAS J2EE Security.www.softbasic.net.sim
- 002. WAS Virtual Administrator Key Storage Service.www.softbasic.net.sim
- 003. WAS Virtual Administrator SAML Service.www.softbasic.net.sim

- 004. WAS Virtual Administrator Secure Storage Service.www.softbasic.net.sim
- 005. WAS Virtual Administrator Security Provider Service.www.softbasic.net.sim
- 006. WAS Virtual Administrator SSL Provider Service.www.softbasic.net.sim
- 007. WAS Virtual Administrator User Storage Service.www.softbasic.net.sim
- 008. WAS-J2EESecurity.www.softbasic.net.sim
- 009. WAS-OverviewOfeBusinessSecurity-EstablishingTrustRelationships.www.softbasic.net.sim
- 010. WASSecurityServices-SAMLSERVICE.www.softbasic.net.sim

Volume name is SAP Simulator

Directory of K:\Room - ERP Learning\SAP Simulator\SAP Simulator - Original\X EXTRACTED\
=====

- 001. xApp-Analytics-CategorySalesAnalysis.www.softbasic.net.sim
- 002. xApp-Analytics-CompetitiveWinLossAnalysis.www.softbasic.net.sim
- 003. XI-AssignInterfaceMappingtoInterfaceDetermination.sim
- 004. XI-AssignInterfaceMappingtoInterfaceDetermination.www.softbasic.net.sim
- 005. XI-CreateInterfaceMapping.sim
- 006. XI-CreateInterfaceMapping.www.softbasic.net.sim
- 007. XI-CreateMessageMapping.sim
- 008. XI-CreateMessageMapping.www.softbasic.net.sim
- 009. XI-Createnamespace.sim
- 010. XI-CreateSoftwareComponent.sim
- 011. XI-CreateSoftwareComponent.www.softbasic.net.sim
- 012. XI-ImportSW.sim
- 013. XI-ImportSW.www.softbasic.net.sim
- 014. XI-LogonToIB-Design.sim
- 015. XI-LogonToIB-Design.www.softbasic.net.sim
- 016. XI-LogonToIntegrationBuilderConfiguration.sim
- 017. XI-LogonToIntegrationBuilderConfiguration.www.softbasic.net.sim
- 018. XI-LogonToSLD.sim